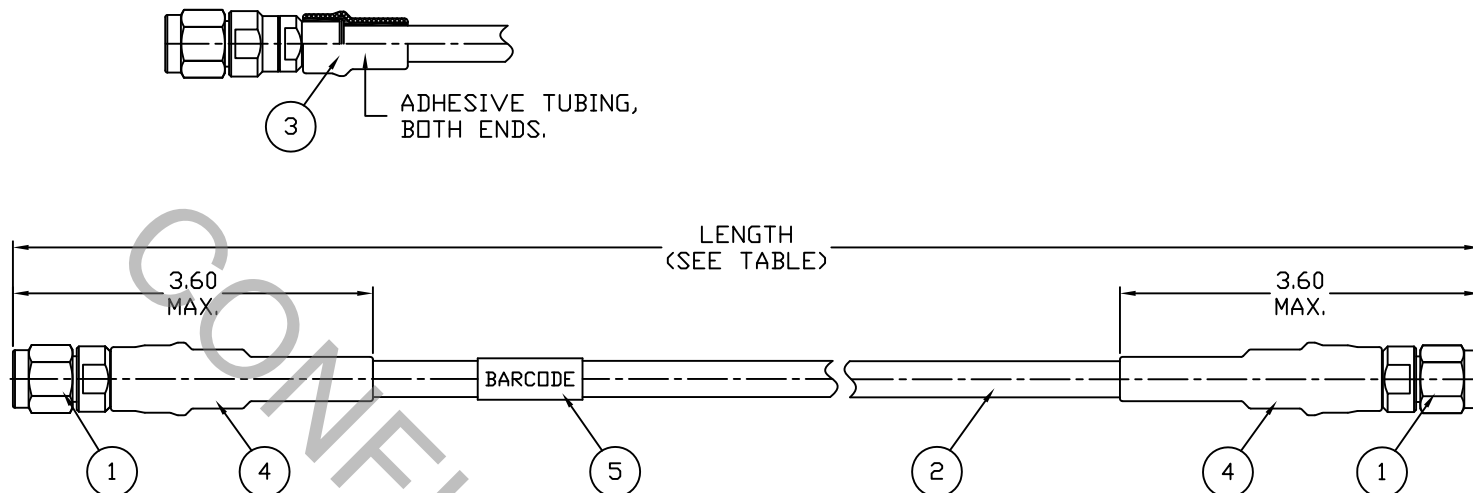


# SPECIFICATION CONTROL DRAWING

DWG. NO. TMTM-B7PW-XXX

TABLE

TMTM-B7PW-120	120"	1.20"	-4.05
TMTM-B7PW-118	118"	1.18"	-3.99
TMTM-B7PW-108	108"	1.08"	-3.68
TMTM-B7PW-098	98"	.98"	-3.36
TMTM-B7PW-096	96"	.96"	-3.30
TMTM-B7PW-084	84"	.84"	-2.92
TMTM-B7PW-079	79"	.79"	-2.76
TMTM-B7PW-072	72"	.72"	-2.54
TMTM-B7PW-060	60"	.60"	-2.16
TMTM-B7PW-059	59"	.59"	-2.13
TMTM-B7PW-054	54"	.54"	-1.98
TMTM-B7PW-048	48"	.48"	-1.79
TMTM-B7PW-042	42"	.42"	-1.60
TMTM-B7PW-040	40"	.40"	-1.53
TMTM-B7PW-039	39"	.39"	-1.50
TMTM-B7PW-036	36"	.36"	-1.41
TMTM-B7PW-030	30"	.30"	-1.22
TMTM-B7PW-024	24"	.25"	-1.03
TMTM-B7PW-018	18"	.25"	-0.84
TMTM-B7PW-012	12"	.25"	-0.65
PART NUMBER	LENGTH	+/-	LOSS dB



5	1	PDL-2	PANDUIT LABEL (BARCODE)
4	A/R	B2(3X)18/9	SUMITUBE, BLACK
3	A/R	M23053/4-303-0	TUBING, ADHESIVE
2	A/R	DF418W	Ø.345 LOW LOSS CABLE
1	2	8400-418W-6200	TNC(P)STR, SO/CL, DF418W
ITEM	QTY	PART NUMBER	DESCRIPTION

- NOTES:  
 1) CONNECTORS ASSEMBLED PER MANUFACTURERS INSTRUCTIONS.  
 2) TESTED 100%, DC - 18.0 GHz., VSWR 1.30:1, LOSS -X.XXdB (SEE TABLE).  
 3) TEST DATA SUPPLIED WITH ASSEMBLY.

REV.	DCN NUMBER	DATE	APP.	PACKAGE MARKING			A. DIMENSIONS ARE IN INCHES.			dynawave <sup>®</sup> CABLE INCORPORATED Haverhill, MA. 01835	
AA	15-2377	10/7/15	DC	CUST. CAGE: N/A CUST. P/N: N/A DYNA. CAGE: 6DZL5 DYNA. P/N: TMTM-B7PW-XXX LOT NO.: XXXXXX DATE CODE: XXXX			CUSTOMER <b>CATALOG ITEM</b>			TITLE <b>DynaFlex<sup>®</sup> ASSEMBLY</b>	
				TOLERANCES			DRAWN: DC DATE: 9/4/15			DRAWING NO. TMTM-B7PW-XXX	
				DECIMALS	FRACTIONAL	DEGREES	APPROVED: DC DATE: 9/4/15				
				.X ±.250		X°±1°0'	SCALE	CODE IDENT	SHEET		
				.XX ±.125	± 1/16"	X°X' ±15'	N/A	6DZL5	1 of 1		
				.XXX ±.060							