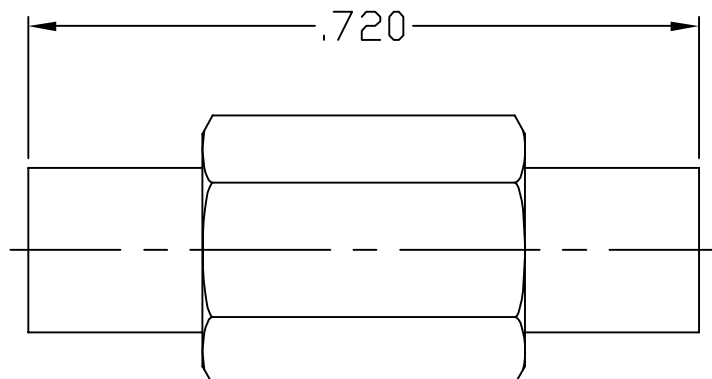


SPECIFICATION CONTROL DRAWING



CONFIDENTIAL


1. MATING INTERFACE DIMENSIONS Per CECC 22220 (MCX JACK).

2. ELECTRICAL

FREQUENCY RANGE GHz _____	DC TO 6.0 GHz
VSWR (MAX) * _____	1.50:1 MAX.
INSERTION LOSS (dB MAX) * _____	.10 dB x $\sqrt{\text{FGHz}}$
NOMINAL IMPEDANCE (OHMS) _____	50
VOLTAGE RATING (MAX. VRMS) _____	170
RF LEAKAGE (MIN. dB DOWN) _____	-60 dB - FGHz
TEMPERATURE RATING (DEGREES CENTIGRADE) _____	-65°c TO + 165°c
DIELECTRIC WITHSTANDING VOLTAGE (MAX. VRMS) _____	500
INSULATION RESISTANCE (MIN. MEGOHMS) _____	5,000
CONTACT RESISTANCE	
• CENTER CONTACT (MAX. MILLIOHMS) _____	6.0
• OUTER CONTACT (MAX. MILLIOHMS) _____	2.0

* TERMINATED IN A 50 OHM LOAD

RoHS
COMPLIANT

REV.	DCN NO.	DATE	APP.	DIMENSIONS ARE IN INCHES TOLERANCES			 HAVERHILL, MA 01835
AA	08-1023	1/7/08	DC	DECIMALS .X ± .030 .XX ± .010 .XXX ± .005	FRACTIONAL ± 1/64	ANGULAR X ° ± 1° 0' X ° X' ± 15'	
				DRAWN DC	DATE 1/7/08	TITLE MCX JACK TO MCX JACK ADAPTER	
				APPROVED DC	DATE 1/7/08		
				CODE IDENT. 2J899	SHEET 1 OF 2	DWG. NO. 1100-1616-2400	

SPECIFICATION CONTROL DRAWING

3. MECHANICAL

CAPTIVATION-CENTER CONTACT

MAX AXIAL FORCE _____ 4.0 LBS.

MAX RADIAL TORQUE _____ N/A

CENTER CONTACT AXIAL FORCES

● INSERTION (MAX OUNCES) _____ INTERFACE 48.0

● WITHDRAWAL (MIN. OUNCES) _____ INTERFACE 1.0

CONNECTOR ENGAGEMENT FORCES

● INSERTION (MAX. LBS) _____ 5.6

● WITHDRAWAL (MIN. LBS) _____ 4.5

CONNECTOR DURABILITY (MIN. CYCLES) _____ 500

4. ENVIRONMENTAL

TEMPERATURE CYCLING _____ MIL-STD-202, METHOD 102, COND. C (-65° c TO +165° c)

SHOCK _____ MIL-STD-202, METHOD 213, COND. I (100 G's)

VIBRATION _____ MIL-STD-202, METHOD 204, COND. D (20 G's)

MOISTURE RESISTANCE _____ MIL-STD-202, METHOD 106, LESS STEP 7b

CORROSION _____ MIL-STD-202, METHOD 101, COND. B (48 HOURS)

BAROMETRIC PRESSURE (ALTITUDE) _____ MIL-STD-202, METHOD 105, COND. C (70,000 FT.) (125 VRMS)

5. MATERIAL

BODY _____ BRASS PER ASTM-B-16, TEMPER H02, ALLOY C36000.

CONTACT _____ BERYLLIUM COPPER PER ASTM-B-196-90, COPPER ALLOY
No. UNS-C17300, TEMPER TD04.

INSULATOR _____ TEFLON PER ASTM-D-1711-02, TYPE 2, GRADE 1, CLASS A.

6. FINISH

BODY _____ GOLD FLASH PER ASTM-B-488
OVER NICKEL per QQ-N-290
OVER COPPER per MIL-C-14550

CONTACT _____ GOLD FLASH PER ASTM-B-488
OVER NICKEL per QQ-N-290
OVER COPPER per MIL-C-14550

INSULATOR _____ N/A