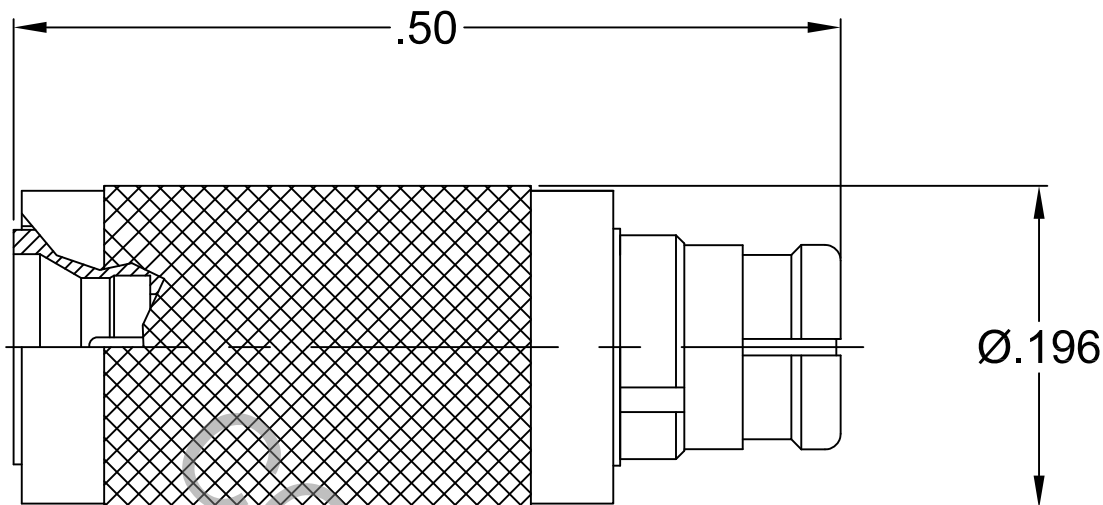


SPECIFICATION CONTROL DRAWING




1. MATING INTERFACE DIMENSIONS Per MIL-STD-348
Fig. 326.1 (SMP, FEMALE JACK), AND Fig. 328.2 (SMPM MALE FD).

2. ELECTRICAL

FREQUENCY RANGE GHz	_____	DC TO 40.0 GHz
VSWR (MAX) *	_____	1.05 + .009 x FGHz
INSERTION LOSS (dB MAX) *	_____	.06 dB x $\sqrt{\text{FGHz}}$
NOMINAL IMPEDANCE (OHMS)	_____	50
VOLTAGE RATING (MAX. VRMS)	_____	165
RF LEAKAGE (MIN. dB DOWN)	_____	-65dB - FGHz
TEMPERATURE RATING (DEGREES CENTIGRADE)	_____	-65°C TO + 165°C
DIELECTRIC WITHSTANDING VOLTAGE (MAX. VRMS)	_____	500
INSULATION RESISTANCE (MIN. MEGOHMS)	_____	5,000
CONTACT RESISTANCE		
• CENTER CONTACT (MAX. MILLIOHMS)	_____	6.0
• OUTER CONTACT (MAX. MILLIOHMS)	_____	2.0

* TERMINATED IN A 50 OHM LOAD

RoHS
COMPLIANT

REV.	DCN NO.	DATE	APP.	DIMENSIONS ARE IN INCHES TOLERANCES			 HAVERHILL, MA 01835
AA	13-1487	4/4/13	TS	DECIMALS .X ± .030 .XX ± .010 .XXX ± .005	FRACTIONAL ± 1/64	ANGULAR X ° ± 1° 0' X ° X' ± 15'	
BA	16-1805	6/29/16	TS				
				DRAWN TS	DATE 4/4/13	TITLE SMP, JACK TO SMPM MALE FULL DETENT ADAPTER	
				APPROVED DC	DATE 4/4/13		
				CODE IDENT. 2J899	SHEET 1 OF 2	DWG. NO. 1100-2031-5450	

SPECIFICATION CONTROL DRAWING

3. MECHANICAL

CAPTIVATION-CENTER CONTACT

MAX AXIAL FORCE _____ 4.5 LBS.

MAX RADIAL TORQUE _____ N/A

FEMALE CENTER CONTACT AXIAL FORCES

● INSERTION (MAX. OUNCES) _____ SMP INTERFACE 32.0

● WITHDRAWAL (MIN. OUNCES) _____ SMP INTERFACE 1.0

CONNECTOR ENGAGEMENT/DISENGAGEMENT (LBS.) _____ N/A

CONNECTOR DURABILITY (MIN. CYCLES) _____ N/A

RECOMMENDED MATING TORQUE _____ N/A

4. ENVIRONMENTAL

TEMPERATURE CYCLING _____ MIL-STD-202, METHOD 102, COND. C (-65° c TO + 165° c)

SHOCK _____ MIL-STD-202, METHOD 213, COND. I (100 G's)

VIBRATION _____ MIL-STD-202, METHOD 204, COND. D (20 G's)

MOISTURE RESISTANCE _____ MIL-STD-202, METHOD 106, LESS STEP 7b

CORROSION _____ MIL-STD-202, METHOD 101, COND. B (48 HOURS)

BAROMETRIC PRESSURE (ALTITUDE) _____ MIL-STD-202, METHOD 105, COND. C (70,000 FT.) (125 VRMS)

5. MATERIAL

SMPM BODY AND CONNECTOR BODY _____ STAINLESS STEEL PER ASTM A 581, TYPE 303, COND. A.

CONTACT, SMP BODY, ANTI-ROCK RING _____ BERYLLIUM COPPER PER ASTM B196/B, 196-03, COPPER
AND EMI SHIELD ALLOY No. UNS-C17300, TEMPER TD04.

INSULATOR _____ TEFLON PER ASTM D 1710-02, TYPE 1, GRADE 1, CLASS B.

6. FINISH

SMPM BODY AND CONNECTOR BODY _____ PASSIVATE PER AMS 2700, TYPE 2, CLASS 4.

SMP BODY, ANTI-ROCK RING _____ GOLD PER ASTM-B-488, TYPE I, CODE C, CLASS 1.25
AND EMI SHIELD (.000050 MIN. THK.) OVER NICKEL PER SAE AMS QQ-N-290, CLASS 1
(.000050 MIN. THK.) OVER COPPER PER AMS 2418 (.000010 MIN. THK.)

CONTACT _____ GOLD PER ASTM-B-488, TYPE I, CODE C, CLASS 1.27
(.000050 MIN. THK.) OVER NICKEL PER SAE AMS QQ-N-290, CLASS 1
(.000050 MIN. THK.) OVER COPPER PER AMS 2418 (.000010 MIN. THK.)

INSULATOR _____ N/A