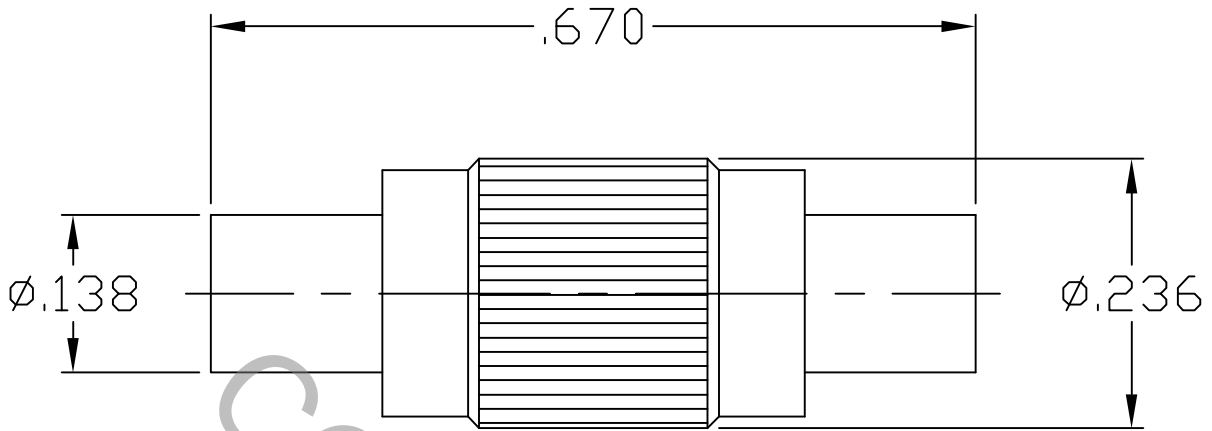


SPECIFICATION CONTROL DRAWING




1. MATING INTERFACE DIMENSIONS Per CECC-22000.

2. ELECTRICAL

FREQUENCY RANGE GHz	DC TO 6.0 GHz
VSWR (MAX) *	1.30:1
INSERTION LOSS (dB MAX) *	-.10 dB x \sqrt{FGHz}
NOMINAL IMPEDANCE (OHMS)	50
VOLTAGE RATING (MAX. VRMS)	170
RF LEAKAGE (MIN. dB DOWN)	N/A
TEMPERATURE RATING (DEGREES CENTIGRADE)	-40°c TO + 90°c
DIELECTRIC WITHSTANDING VOLTAGE (MAX. VRMS)	500
INSULATION RESISTANCE (MIN. MEGOHMS)	1,000
CONTACT RESISTANCE	
• CENTER CONTACT (MAX. MILLIOHMS)	5.0
• OUTER CONTACT (MAX. MILLIOHMS)	2.5

* TERMINATED IN A 50 OHM LOAD

RoHS
COMPLIANT

REV.	DCN NO.	DATE	APP.	DIMENSIONS ARE IN INCHES TOLERANCES			 HAVERHILL, MA 01835
AA	08-1270	3/12/08	DC	DECIMALS .X ± .030 .XX ± .010 .XXX ± .005	FRACTIONAL ± 1/64	ANGULAR X ° ± 1'0" X ° X' ± 15'	
				DRAWN DC	DATE 3/12/08	TITLE MMCX JACK TO MMCX JACK ADAPTER	
				APPROVED DC	DATE 3/12/08		
				CODE IDENT. 2J899	SHEET 1 OF 2	DWG. NO. 1100-2525-2400	

SPECIFICATION CONTROL DRAWING

3. MECHANICAL

CAPTIVATION-CENTER CONTACT

MAX AXIAL FORCE _____ 4.0 LBS.

MAX RADIAL TORQUE _____ N/A

CENTER CONTACT AXIAL FORCES

● INSERTION (MAX OUNCES) _____ INTERFACE 32.0

● WITHDRAWAL (MIN. OUNCES) _____ INTERFACE 2.0

CONNECTOR ENGAGEMENT/DISENGAGEMENT (MAX LBS.) _____ 3.4

CONNECTOR DURABILITY (MIN. CYCLES) _____ 500

RECOMMENDED MATING TORQUE _____ N/A

4. ENVIRONMENTAL

THERMAL SHOCK _____ MIL-STD-202, METHOD 107, COND. B (-65° c TO +125° c)

SHOCK _____ MIL-STD-202, METHOD 213, COND. I (100 G's)

VIBRATION _____ MIL-STD-202, METHOD 204, COND. D (20 G's)

MOISTURE RESISTANCE _____ MIL-STD-202, METHOD 106, LESS STEP 7b

CORROSION _____ MIL-STD-202, METHOD 101, COND. B (48 HOURS)

BAROMETRIC PRESSURE (ALTITUDE) _____ MIL-STD-202, METHOD 105, COND. C (70,000 FT.) (125 VRMS)

5. MATERIAL

BODY _____ BRASS PER ASTM-B-16, TEMPER H02, ALLOY C36000.

CONTACT _____ BERYLLIUM COPPER PER ASTM-B-196-90, COPPER ALLOY
No. UNS-C17300, TEMPER TD04.

INSULATOR _____ TEFLON PER ASTM-D-1710-02, TYPE 2, GRADE 1, CLASS A.

6. FINISH

BODY & CONTACT _____ GOLD PER ASTM-B-488

INSULATOR _____ N/A