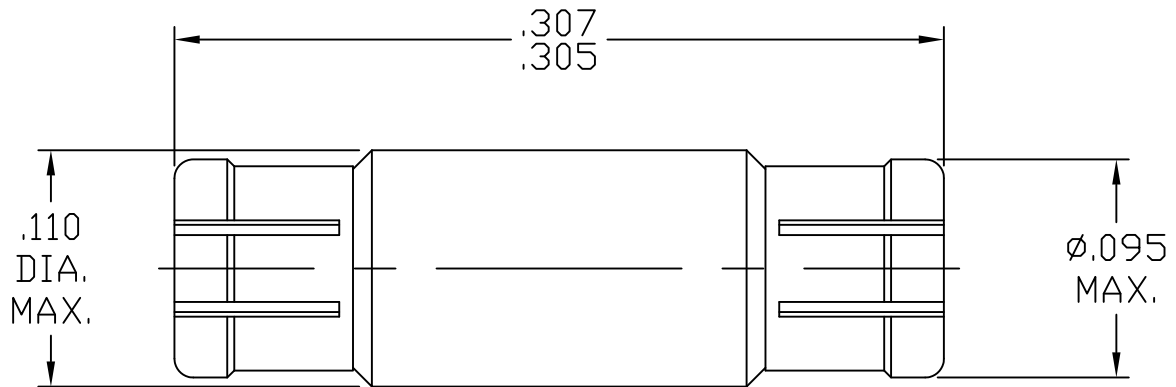


SPECIFICATION CONTROL DRAWING



1. MATING INTERFACE DIMENSIONS PER MIL-STD-348A Fig. 328.1


2. ELECTRICAL

FREQUENCY RANGE	_____	DC TO 50.0 GHz.
(DC TO 23.0 GHz.) *	_____	VSWR 1.10 MAX.
(23.0 TO 26.5 GHz.) *	_____	VSWR 1.15 MAX.
(26.5 TO 40.0 GHz.) *	_____	VSWR 1.40 MAX.
(40.0 TO 50.0 GHz.) *	_____	VSWR 1.50 MAX.
INSERTION LOSS (dB MAX.)	_____	.10 dB x $\sqrt{\text{FGHz}}$.
NOMINAL IMPEDANCE (OHMS)	_____	50
VOLTAGE RATING (MAX. VRMS)	<input type="text"/>	325 @ SEA LEVEL
(OVER FREQ. RANGE)		45 @ 70,000 FEET
RF LEAKAGE (MIN. dB DOWN)	<input type="text"/>	80 dB (3 GHz. MAX.)
		65 dB (26.5 GHz. MAX.)
TEMPERATURE RATING (DEGREES CENTIGRADE)	_____	-65 ° c TO + 165 ° c
DIELECTRIC WITHSTANDING VOLTAGE (MAX. VRMS)	<input type="text"/>	500 @ SEA LEVEL
		125 @ 70,000 FEET
INSULATION RESISTANCE (MIN. MEGOHMS)	_____	5,000
CONTACT RESISTANCE		
• CENTER CONTACT (MAX. MILLIOHMS)	_____	2.0
• OUTER CONTACT (MAX. MILLIOHMS)	_____	2.0

* TESTED IN ACCORDANCE WITH DSCC 94007 VSWR PROCEDURE.

RoHS

This Document contains proprietary and confidential information. **COMPLIANT**

REV.	DCN NO.	DATE	APP.	DIMENSIONS ARE IN INCHES TOLERANCES			 HAVERHILL, MA. 01835
				DECIMALS .X ± .030 .XX ± .010 .XXX ± .005	FRACTIONAL ± 1/64	ANGULAR X ° ± 1' 0" X ° X' ± 15"	
AA	16-2485	12/2/16	TS				TITLE SMPM, INTERCONNECT ADAPTER FEMALE TO FEMALE
AB	17-1281	2/28/17	TS				
				DRAWN TS	DATE 11/15/05		DWG. NO. 1100-3030-5432
				APPROVED DC	DATE 11/15/05		
				CODE IDENT. 2J899	SHEET 1 OF 2		

SPECIFICATION CONTROL DRAWING

3. MECHANICAL

CAPTIVATION-CENTER CONTACT

- MIN. AXIAL FORCE _____ 1.5 LBS.
- MIN. RADIAL TORQUE _____ N/A

RADIAL MISALIGNMENT _____ .010 MIN.
AXIAL MISALIGNMENT _____ .000/.007

CONNECTOR DURABILITY (MIN. MATING) _____ A.) FULL DETENT _____ 100
B.) SMOOTH BORE _____ 1000

CONNECTOR ENGAGEMENT (MAX. LBS) _____ A.) FULL DETENT _____ 5.0
B.) SMOOTH BORE _____ 2.0

CONNECTOR DISENGAGEMENT (MIN. LBS) _____ A.) FULL DETENT _____ 2.5
B.) SMOOTH BORE _____ 0.5

4. ENVIRONMENTAL

THERMAL SHOCK _____ MIL-STD-202, METHOD 107, COND. B (HIGH TEMP. +165°c)
SHOCK _____ MIL-STD-202, METHOD 213, COND. I (100 G's)
VIBRATION _____ MIL-STD-202, METHOD 204, COND. D (20 G's)
MOISTURE RESISTANCE _____ MIL-STD-202, METHOD 106, LESS STEP 7b,
1000 MEGOHMS MINIMUM WITHIN 5 MINUTES.
CORONA (70,000 FEET) _____ 125 VRMS
RF HIGH POTENTIAL MIN. VOLTS _____ 200 VRMS @ SEA LEVEL, FREQ. 5 MHz.
VIBRATION, RANDOM _____ MIL-STD 202, METHOD 214, TEST CONDITION F

5. MATERIAL

CONNECTOR BODY AND CENTER CONTACT _____ BERYLLIUM COPPER PER ASTM B196/B, 196M-03, COPPER
ALLOY No. UNS C17300, TEMPER TD04.
INSULATOR _____ TEFLON PER ASTM D 1710-02, TYPE 1, GRADE 1, CLASS B.

6. FINISH

CONNECTOR BODY _____ GOLD PER ASTM-B-488, TYPE I, CODE C, CLASS 1.25
(.000050 MIN. THK.) OVER NICKEL SAE AMS PER QQ-N-290, CLASS 1
(.000100 MIN. THK.) OVER COPPER PER AMS 2418 (.000040 MIN.)
CONTACT _____ GOLD PER ASTM-B-488, TYPE I, CODE C, CLASS 1.25
(.000050 MIN. THK.) OVER NICKEL PER SAE AMS QQ-N-290, CLASS 1
(.000050 MIN. THK.) OVER COPPER PER AMS 2418 (.000010 MIN.)
INSULATOR _____ N/A