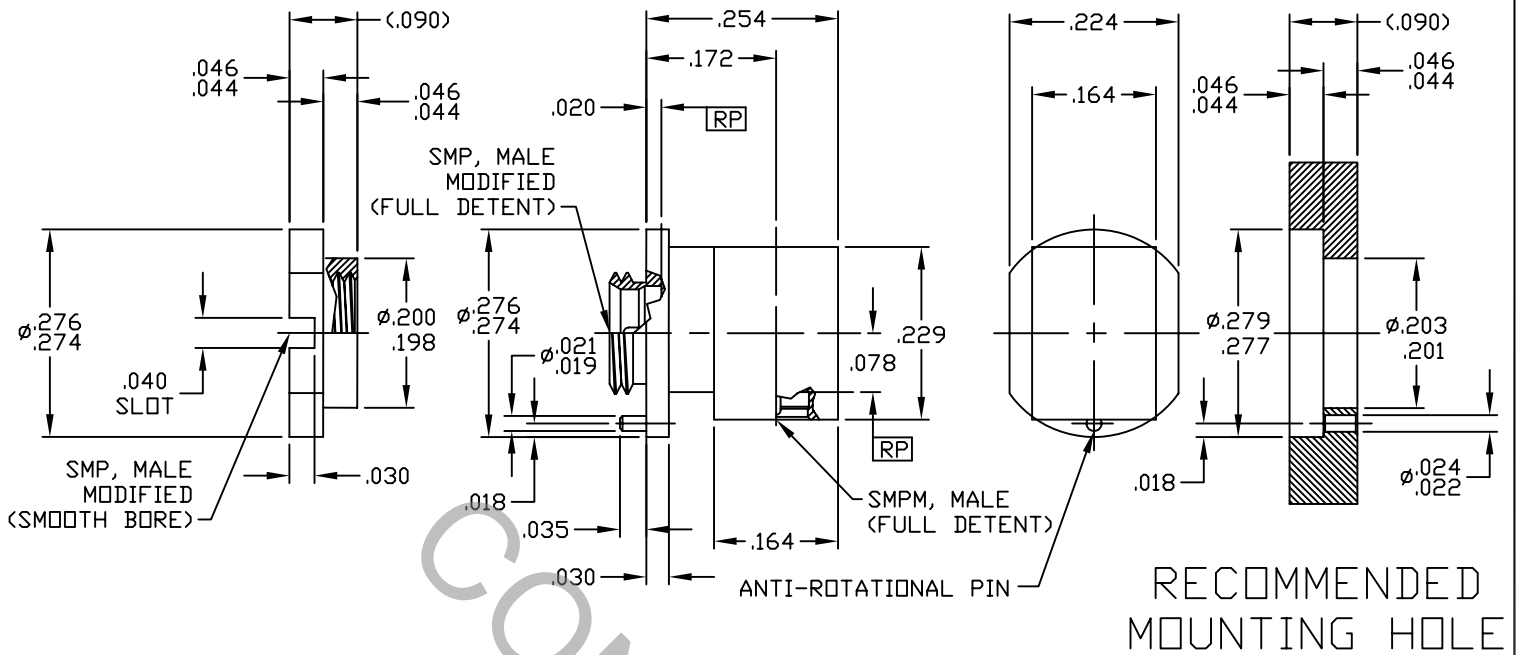


SPECIFICATION CONTROL DRAWING



1. MATING INTERFACE DIMENSIONS PER MIL-STD-348A, Fig. 326.2 (SMP, MALE, FULL DETENT) Fig. 326.4 (SMP, MALE, SMOOTH BORE) AND MIL-STD-348A, Fig. 328.2 (SMPM, MALE, FULL DETENT).

2. ELECTRICAL

FREQUENCY RANGE GHz	DC TO 26.5 GHz.
VSWR (MAX.) *	1.12 + .020 x FGHz.
INSERTION LOSS (dB MAX.)	.04 dB x $\sqrt{\text{FGHz}}$.
NOMINAL IMPEDANCE (OHMS)	50
VOLTAGE RATING (MAX. VRMS)	170
RF LEAKAGE (MIN. dB DOWN)	-65 dB
TEMPERATURE RATING (DEGREES CENTIGRADE)	-65° c TO + 165° c
DIELECTRIC WITHSTANDING VOLTAGE (MAX. VRMS)	500
INSULATION RESISTANCE (MIN. MEGOHMS)	5,000
CONTACT RESISTANCE	
• CENTER CONTACT (MAX. MILLIOHMS)	6.0
• OUTER CONTACT (MAX. MILLIOHMS)	2.0

* TERMINATED IN A 50 OHM LOAD

RoHS
COMPLIANT

REV.	DCN NO.	DATE	APP.	DIMENSIONS ARE IN INCHES TOLERANCES			 INCORPORATED HAVERHILL, MA. 01835
				DECIMALS	FRACTIONAL	ANGULAR	
AA	08-1582	6/11/08	TS	.X ± .030 .XX ± .010 .XXX ± .005	± 1/64	X° ± 1° 0' X° X' ± 15'	TITLE SMP, MALE RIGHT ANGLE TO SMPM MALE, BULKHEAD ADAPTER
AB	08-2004	11/21/08	TS				
				DRAWN TS	DATE 6/11/08		
				APPROVED DC	DATE 6/11/08		
				CODE IDENT.		DWG. NO.	
				2J899	SHEET 1 OF 2	1101-2131-6200	

SPECIFICATION CONTROL DRAWING

3. MECHANICAL

CAPTIVATION-CENTER CONTACT

- MIN. AXIAL FORCE _____ N/A
- MIN. RADIAL TORQUE _____ N/A

CONNECTOR ENGAGEMENT FORCE

- INSERTION (MAX. LBS.) _____ SMP 15.0 LBS./ SMPM 6.5 LBS.
- WITHDRAWAL (MIN. LBS.) _____ SMP 5.0 LBS. MAX./ SMPM 5.0 LBS. MAX.

CONNECTOR DURABILITY (MIN. MATING) _____ SMP 100/ SMPM 100

CONNECTOR ASSEMBLY TORQUE _____ 4.0 / 6.0 IN./LBS.

4. ENVIRONMENTAL

TEMPERATURE CYCLING _____ MIL-STD-202, METHOD 102, COND. C (-65 °c TO + 165° c)

SHOCK _____ MIL-STD-202, METHOD 213, COND. I (100 G's)

VIBRATION _____ MIL-STD-202, METHOD 204, COND. D (20 G's)

MOISTURE RESISTANCE _____ MIL-STD-202, METHOD 106, LESS STEP 7b

CORROSION _____ MIL-STD-202, METHOD 101, COND. B (48 HOURS)

BAROMETRIC PRESSURE (ALTITUDE) _____ MIL-STD-202, METHOD 105, COND. C (70,000 FT.) (125 VRMS)

5. MATERIAL

CONNECTOR BODY, COLLAR, PRESS SLEEVE AND SMPM SHROUD — STAINLESS STEEL PER ASTM A 582, TYPE 303, COND A.

CENTER CONTACT _____ BERYLLIUM COPPER PER ASTM B196/B, 196M-03, COPPER ALLOY No. UNS C17300, TEMPER TD04.

INSULATOR _____ TEFLON PER ASTM D 1710-02, TYPE 1, GRADE 1, CLASS B.

6. FINISH

CONNECTOR BODY, COLLAR, PRESS SLEEVE AND SMPM SHROUD — PASSIVATE PER AMS QQ-P-35, TYPE 2.

CONTACT _____ GOLD PER ASTM B 488, TYPE 1, CODE C, CLASS 2.5 (.00010 MIN.) OVER NICKEL PER QQ-N-290, CLASS 1 (.000050 MIN.) OVER COPPER PER MIL-C-14550 (.000010 MIN.)

INSULATOR _____ N/A