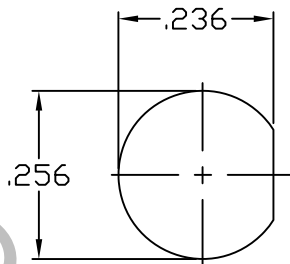


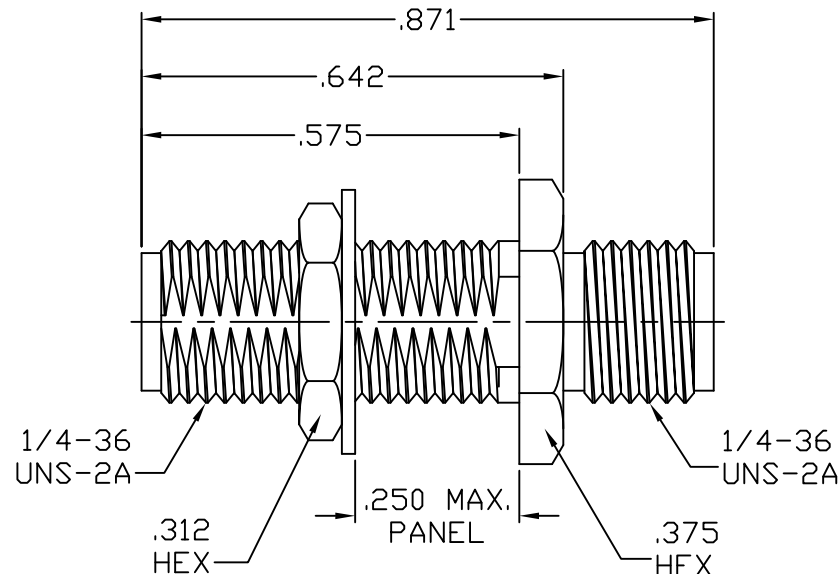
ADAPTER SERIES: : SMA / SMA
CENTER CONDUCTOR END 1: : FEMALE SOCKET
CENTER CONDUCTOR END 2: : FEMALE SOCKET
NOMINAL IMPEDANCE: (OHMS) : 50
CONTACT CAPTIVATION: : 6.0 LBs.
FREQUENCY RANGE: : DC TO 18.0 GHz.
QPL SPECIFICATION: : N/A
QPL EQUIVALENT: : N/A

MATING CHARACTERISTICS : MIL-STD-348-310.2
MATING TORQUE : 7 TO 10 POUND INCHES
MOUNTING TORQUE : 18 TO 23 POUND INCHES
TEMPERATURE RANGE : -65 / +165 DEGREES C.

ELECTRICAL:
VSWR MAXIMUM : 1.05 + .005 x FGHz.
INSERTION LOSS MAXIMUM : .030 dB $\sqrt{\text{FGHz}}$
R.F. LEAKAGE MINIMUM : -100 dB
D.C. RESISTANCE : 5,000 MOHMS MINIMUM



RECOMMENDED MOUNTING



ITEM	MATERIALS	FINISHES
BODY	: BRASS PER ASTM-B-16	: GOLD PER ASTM-B-488
HEX NUT	: BRASS PER ASTM-B-16	: GOLD PER ASTM-B-488
LOCKWASHER	: PHOSPHOR BRONZE	: GOLD PER ASTM-B-488
INSULATOR	: PTFE PER ASTM-D-1710	: N/A
CONTACT	: COPPER, BERYLLIUM PER ASTM-B196	: GOLD PER ASTM-B-488

REV.	DCN NUMBER	DATE	APP.
AA	04-2235	10/14/04	DC
AB	17-1752	6/13/17	TS

SPECIFICATION CONTROL DRAWING



TITLE
**SMA (J)
 BULKHEAD TO
 SMA (J) ADAPTER**

TOLERANCES			DRAWN: DC	DATE: 10/14/04
DECIMALS	FRACTIONAL	DEGREES	APPROVED: DC	DATE: 10/14/04
.X ±.030		X°±1°0'	SCALE	CODE IDENT
.XX ±.010	± 1/16"	X°X' ±15'	N/A	2J899
.XXX ±.005			SHEET	1 of 1

DRAWING NO. **1110-9999-2400**