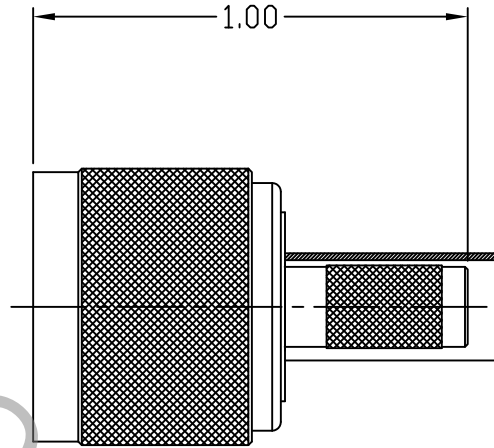


SPECIFICATION CONTROL DRAWING




1. MATING INTERFACE DIMENSIONS PER MIL-STD-348A, Fig. 313.1

2. ELECTRICAL

FREQUENCY RANGE GHz	DC TO 6.0 GHz.
VSWR (MAX.) *	1.30
INSERTION LOSS (dB MAX.)*	.18 dB MAX.
NOMINAL IMPEDANCE (OHMS)	50
VOLTAGE RATING (MAX. VRMS)	500
RF LEAKAGE (MIN. dB DOWN)	60 dB - FGHz.
TEMPERATURE RATING (DEGREES CENTIGRADE)	-65°c TO + 135°c
DIELECTRIC WITHSTANDING VOLTAGE (MAX. VRMS)	1,000
INSULATION RESISTANCE (MIN. MEGOHMS)	5,000
CONTACT RESISTANCE	
• CENTER CONTACT (MAX. MILLIOHMS)	2.0
• OUTER CONTACT (MAX. MILLIOHMS)	3.0

* TERMINATED IN A 50 OHM LOAD

RoHS
COMPLIANT

REV.	DCN NO.	DATE	APP.	DIMENSIONS ARE IN INCHES TOLERANCES			 HAVERHILL, MA. 01835
				DECIMALS	FRACTIONAL	ANGULAR	
AA	10-1008	1/6/10	TS	.X ± .030 .XX ± .010 .XXX ± .005	± 1/64	X° ± 1° 0' X° X' ± 15'	
AB	10-1028	1/12/10	TS				
				DRAWN	TS	DATE	1/6/10
				APPROVED	DC	DATE	1/6/10
				CODE IDENT.			
				2J899		SHEET 1 OF 2	
						DWG. NO.	8400-1830-2700
						TITLE TNC, PLUG STRAIGHT, CRIMP ATTACHMENT TO RG 316 DB CABLE	

SPECIFICATION CONTROL DRAWING

3. MECHANICAL

CAPTIVATION-CENTER CONTACT

MAX. AXIAL FORCE _____ 6.0 LBS.

MAX. RADIAL TORQUE _____ N/A

CENTER CONTACT AXIAL FORCES

● INSERTION (MAX. OUNCES) _____ N/A

● WITHDRAWAL (MIN. OUNCES) _____ N/A

CONNECTOR ENGAGEMENT/DISENGAGEMENT (MAX. IN. LBS.) _____ 2.0

CONNECTOR DURABILITY (MIN. CYCLES) _____ 500

RECOMMENDED MATING TORQUE _____ 15 - 20 IN. LBS.

4. ENVIRONMENTAL

TEMPERATURE CYCLING _____ MIL-STD-202, METHOD 102, COND. C (-65° c TO + 165° c)

SHOCK _____ MIL-STD-202, METHOD 213, COND. I (100 G's)

VIBRATION _____ MIL-STD-202, METHOD 204, COND. D (20 G's)

MOISTURE RESISTANCE _____ MIL-STD-202, METHOD 106, LESS STEP 7b

CORROSION _____ MIL-STD-202, METHOD 101, COND. B (48 HOURS)

BAROMETRIC PRESSURE (ALTITUDE) _____ MIL-STD-202, METHOD 105, COND. C (70,000 FT.) (375 VRMS)

5. MATERIAL

CONNECTER BODY, CENTER CONTACT, COUPLING NUT _____ BRASS PER ASTM B16, TEMPER H02, ALLOY C36000.
AND CRIMP SLEEVE

RETAINING RING _____ BERYLLIUM COPPER PER ASTM B196/B, 196M-03, COPPER
ALLOY No. UNS-C17300, TEMPER TD04.

INSULATOR _____ TEFLON PER ASTM D 1710-02, TYPE 1, GRADE 1, CLASS B.

GASKET _____ SILICONE PER ZZ-R-765.

6. FINISH

CONNECTOR BODY, COUPLING NUT AND CRIMP SLEEVE _____ NICKEL PER QQ-N-290, CLASS 1.

CENTER CONTACT _____ GOLD PER ATSM B 488, TYPE I, CODE C, CLASS 2.5
(.00010 MIN. THK.) OVER NICKEL PER QQ-N-290
(.000050 MIN. THK.) OVER COPPER PER MIL-C-14550
(.000010 MIN. THK.)

INSULATOR, RETAINING RING AND GASKET _____ N/A