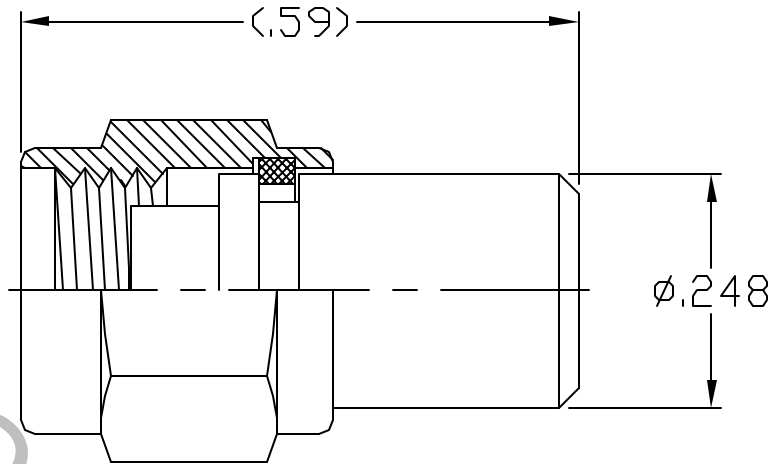


SPECIFICATION CONTROL DRAWING




1. MATING INTERFACE DIMENSIONS FOR SMA PLUG per DIAMOND ANTENNA DRAWING
2124/18-700

2. ELECTRICAL

FREQUENCY RANGE GHz	_____	N/A
VSWR (MAX.) \ast	_____	N/A
INSERTION LOSS (dB MAX.)	_____	N/A
NOMINAL IMPEDANCE (OHMS)	_____	N/A
VOLTAGE RATING (MAX. VRMS)	_____	N/A
RF LEAKAGE (MIN. dB DOWN)	_____	N/A
TEMPERATURE RATING (DEGREES CENTIGRADE)	_____	-65 $^{\circ}$ C TO +165 $^{\circ}$ C
DIELECTRIC WITHSTANDING VOLTAGE (MAX. VRMS)	_____	N/A
INSULATION RESISTANCE (MIN. MEGOHMS)	_____	N/A
CONTACT RESISTANCE		
● CENTER CONTACT (MAX. MILLIOHMS)	_____	N/A
● OUTER CONTACT (MAX. MILLIOHMS)	_____	N/A

\ast TERMINATED IN A 50 OHM LOAD

REV.	DCN NO.	DATE	APP.	DIMENSIONS ARE IN INCHES TOLERANCES			 HAVERHILL, MA 01836	
AA	05-2019	10/7/05	DC	DECIMALS	FRACTIONAL	ANGULAR		
				X \pm .030 XX \pm .010 XXX \pm .005	\pm 1/64	X $^{\circ}$ \pm 1' 0" X $^{\circ}$ X' \pm 15'		
				DRAWN	DC	DATE	10/7/05	TITLE SMA PLUG, STRAIGHT CAP
				APPROVED	DC	DATE	10/7/05	
				CODE IDENT.		SHEET	1 OF 2	DWG. NO. 9800-0000-6200
				2J899				

SPECIFICATION CONTROL DRAWING

3. MECHANICAL

CAPTIVATION-CENTER CONTACT

MAX. AXIAL FORCE _____ N/A

MAX. RADIAL TORQUE _____ N/A

CENTER CONTACT AXIAL FORCES

● INSERTION (MAX. OUNCES) _____ N/A

● WITHDRAWAL (MIN. OUNCES) _____ N/A

CONNECTOR ENGAGEMENT/DISENGAGEMENT (MAX. IN. LBS.) _____ N/A

CONNECTOR DURABILITY (MIN. CYCLES) _____ 1,000

RECOMMENDED MATING TORQUE _____ 7 - 10 IN. LBS.

4. ENVIRONMENTAL

TEMPERATURE CYCLING _____ MIL-STD-202, METHOD 102, COND. C (-65°C TO + 200°C)

SHOCK _____ MIL-STD-202, METHOD 213, COND. I (100 G's)

VIBRATION _____ MIL-STD-202, METHOD 204, COND. D (20 G's)

MOISTURE RESISTANCE _____ N/A

CORROSION _____ MIL-STD-202, METHOD 101, COND. B (48 HOURS)

BAROMETRIC PRESSURE (ALTITUDE) _____ N/A

POWER HANDLING (ALTITUDE) _____ N/A

5. MATERIAL

BODY & COUPLING NUT _____ STAINLESS STEEL PER ASTM A 581, TYPE 303, COND. A

RETAINING RING _____ BERYLLIUM COPPER PER ASTM B106-90, COPPER ALLOY
No. UNS C17300, TEMPER T004.

6. FINISH

BODY & COUPLING NUT _____ PASSIVATE PER AMS QQ-P-35A, TYPE 2

RETAINING RING _____ N/A