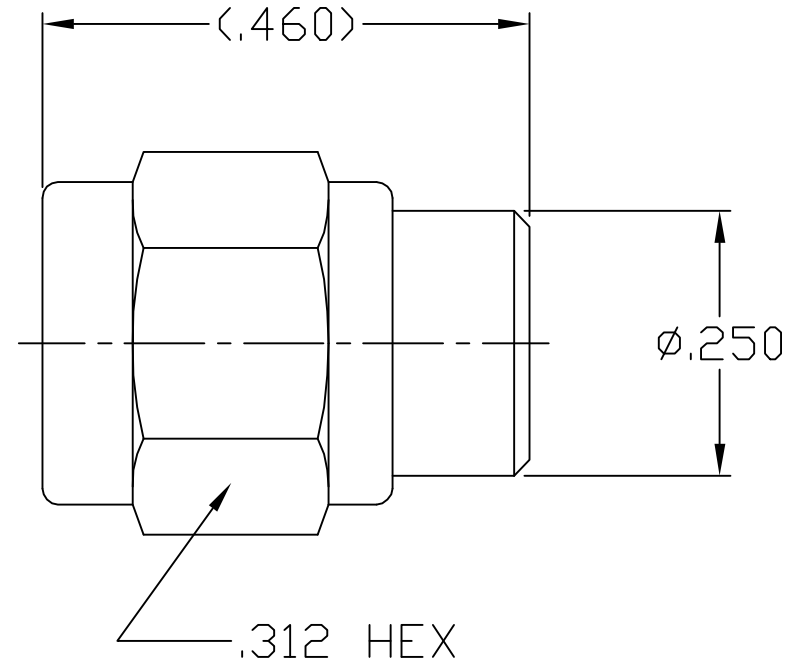


CONNECTOR SERIES: : SMA
 CENTER CONTACT: : NONE
 NOMINAL IMPEDANCE: (OHMS) : N/A
 CABLE ACCOMMODATION: : N/A

CONTACT CAPTIVATION: : N/A
 CABLE ATTACHMENT: : N/A
 CONTACT ATTACHMENT: : N/A
 FREQUENCY RANGE: : N/A
 QPL SPECIFICATION: : N/A
 QPL EQUIVALENT: : N/A

MATING CHARACTERISTICS : MIL-STD-348-310.1
 MATING TORQUE : 10 TO 15 POUND INCHES
 MOUNTING TORQUE : N/A
 TEMPERATURE RANGE : -65 / +165 DEGREES C.

ELECTRICAL:
 VSWR MAXIMUM : N/A
 INSERTION LOSS MAXIMUM : N/A
 R.F. LEAKAGE MINIMUM : N/A
 INSULATION RESISTANCE : N/A
 D.W.V. : N/A



ITEM	MATERIALS	FINISHES
BODY	: 303 STAINLESS PER ASTM-A-582	
NUT	: 303 STAINLESS PER ASTM-A-582	: PASSIVATE PER QQ-P-35
RETAINING RING	: COPPER, BERYLLIUM PER ASTM-B194	: PASSIVATE PER QQ-P-35
GASKET	: SILICONE, RUBBER	: N/A
		: N/A

REV.	DCN NUMBER	DATE	APP.
AA	04-1327	3/11/04	DC
AB	05-1439	4/6/05	DC

SPECIFICATION CONTROL DRAWING



TITLE **SMA MALE CAP FOR FEMALE CONNECTORS**

DECIMALS	TOLERANCES FRACTIONAL	DEGREES
.X ±.030		X°±1'0"
.XX ±.010	± 1/16"	X°X' ±15'
.XXX ±.005		

DRAWN: DC		DATE: 3/11/04
APPROVED: DC		DATE: 3/11/04
SCALE	CODE IDENT	SHEET
N/A	2J899	1 of 1

DRAWING NO. **9800-0090-6200**