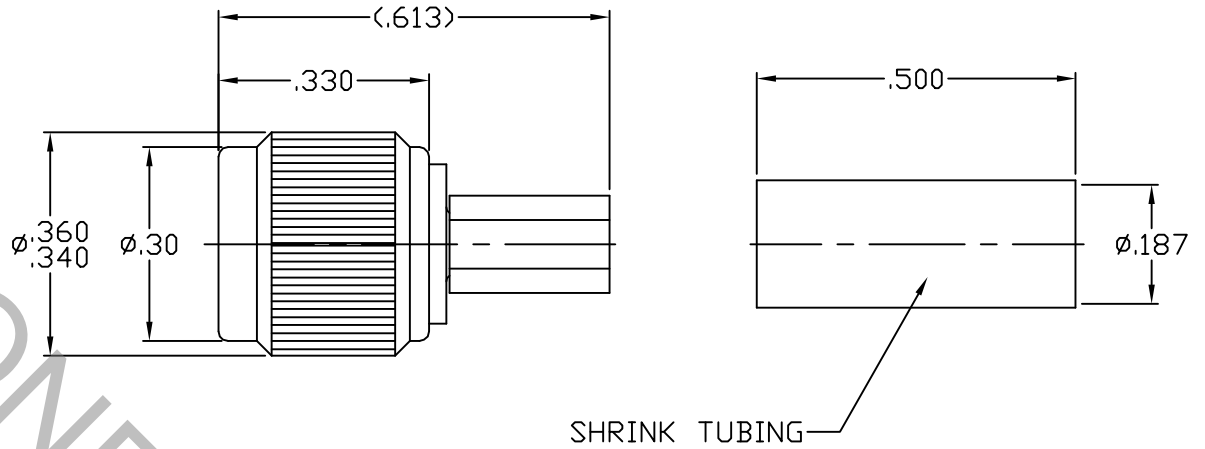


CONNECTOR SERIES: : SMA  
 CENTER CONTACT: : FEMALE SOCKET  
 NOMINAL IMPEDANCE: (OHMS) : 50  
 CABLE ACCOMMODATION: : RG-188  
 : RG-316  
 : LMR-100A  
 CONTACT CAPTIVATION: : N/A  
 CABLE ATTACHMENT: : CRIMP  
 CONTACT ATTACHMENT: : SOLDER  
 FREQUENCY RANGE: : DC TO 6.0 GHz.  
 QPL SPECIFICATION: : N/A  
 QPL EQUIVALENT: : N/A

MATING CHARACTERISTICS : COMMERCIAL  
 MATING TORQUE : 5 TO 7 POUND INCHES  
 MOUNTING TORQUE : N/A  
 TEMPERATURE RANGE : -55 / +125 DEGREES C.

ELECTRICAL:  
 VSWR MAXIMUM : 1.06 x F<sup>.05</sup> (F IN GHz.)  
 INSERTION LOSS MAXIMUM : .040 √FGHz.  
 R.F. LEAKAGE MINIMUM : -100 dB  
 INSULATION RESISTANCE : 5,000 MEGOHMS MIN.  
 D.W.V. : 750 VRMS MAX.



ITEM	MATERIALS	FINISHES
BODY	: BRASS PER ASTM-B-16	: NICKEL PER QQ-N-290
NUT	: BRASS PER ASTM-B-16	: NICKEL PER QQ-N-290
NUT RING	: COPPER, BERYLLIUM PER ASTM-B194	: N/A
CRIMP SLEEVE	: OFHC COPPER	: NICKEL PER QQ-N-290
GASKET	: RUBBER, SILICONE PER ZZ-R-765	: N/A
INSULATOR	: PTFE PER ASTM-D-1710	: N/A
CONTACT	: COPPER, BERYLLIUM PER ASTM-B196	: GOLD PER ASTM-B-488

REV.	DCN NUMBER	DATE	APP.
AA	04-1681	5/21/04	DC

## SPECIFICATION CONTROL DRAWING



TITLE  
**SMA PLUG, POLARIZED,  
 CRIMP FOR RG-188, 316  
 AND LMR-100A**

TOLERANCES		
DECIMALS	FRACTIONAL	DEGREES
.X ±.030		X° ±10'
.XX ±.010	± 1/16"	X°X' ±15'
.XXX ±.005		

DRAWN: DC      DATE: 5/21/04  
 APPROVED: DC      DATE: 5/21/04

SCALE	CODE IDENT	SHEET
N/A	2J899	1 of 1

DRAWING  
 NO. **9800-1630-2700**