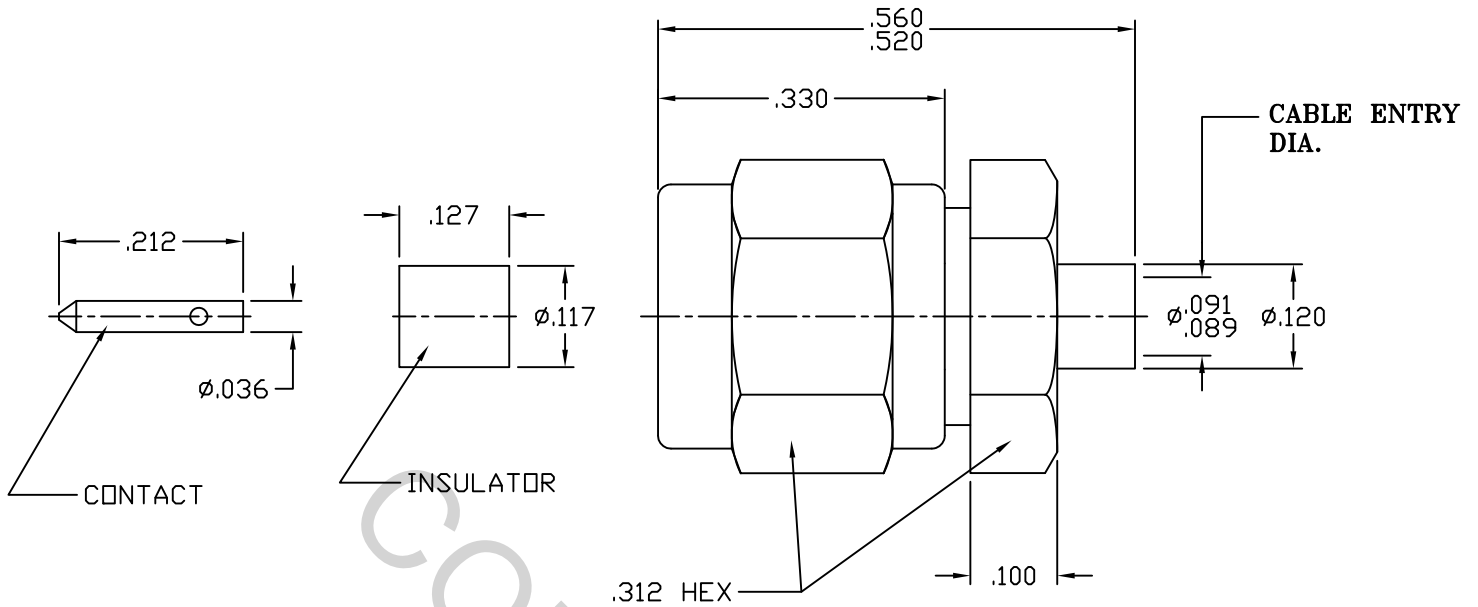


SPECIFICATION CONTROL DRAWING



1. MATING INTERFACE DIMENSIONS FOR SMA PLUG per MIL-STD-348 (Fig. 310-1).


2. ELECTRICAL

FREQUENCY RANGE GHz	DC TO 26.5 GHz.
VSWR (MAX.) *	1.05 + .005 x FGHz
INSERTION LOSS (dB MAX.) *	.03 dB x $\sqrt{\text{FGHz}}$
NOMINAL IMPEDANCE (OHMS)	50
VOLTAGE RATING (MAX. VRMS)	170
RF LEAKAGE (MIN. dB DOWN)	100 dB - FGHz.
TEMPERATURE RATING (DEGREES CENTIGRADE)	-65° c TO + 165° c
DIELECTRIC WITHSTANDING VOLTAGE (MAX. VRMS)	500
INSULATION RESISTANCE (MIN. MEGOHMS)	10,000
CONTACT RESISTANCE	
• CENTER CONTACT (MAX. MILLIOHMS)	3.0
• OUTER CONTACT (MAX. MILLIOHMS)	2.0

* TERMINATED IN A 50 OHM LOAD

This Document contains proprietary and confidential information.

RoHS
COMPLIANT

REV.	DCN NO.	DATE	APP.	DIMENSIONS ARE IN INCHES TOLERANCES			 HAVERHILL, MA. 01835
				DECIMALS	FRACTIONAL	ANGULAR	
				.X ± .030 .XX ± .010 .XXX ± .005	± 1/64	X° ± 1° 0' X° X' ± 15'	
AA	99-0952	10/8/99	DGG				TITLE SMA, PLUG DIRECT SOLDER TO DYNAFORM .086 SEMI-RIGID CABLE
AB	99-1032	10/29/99	DGG				
AC	18-1468	4/27/18	DC	DRAWN TS	DATE 7/90		
				APPROVED DGG	DATE 7/90		
				CODE IDENT.	SHEET 1 OF 2	DWG. NO.	9800-9086-6244
				2J899			

SPECIFICATION CONTROL DRAWING

3. MECHANICAL

CAPTIVATION—CENTER CONTACT

- MIN. AXIAL FORCE _____ N/A
- MIN. RADIAL TORQUE _____ N/A

CENTER CONTACT AXIAL FORCES

- INSERTION (MAX. OUNCES) _____ N/A
- WITHDRAWAL (MIN. OUNCES) _____ N/A

CONNECTOR ENGAGEMENT/DISENGAGEMENT (MAX. IN./LBS.) _____ 2.0

CONNECTOR DURABILITY (MIN. CYCLES) _____ 500

RECOMMENDED MATING TORQUE _____ 7 - 10 IN. LBS.

4. ENVIRONMENTAL

TEMPERATURE CYCLING _____ MIL-STD-202, METHOD 102, COND. C (-65 ° TO + 200 °)

SHOCK _____ MIL-STD-202, METHOD 213, COND. I (100 G's)

VIBRATION _____ MIL-STD-202, METHOD 204, COND. D (20 G's)

MOISTURE RESISTANCE _____ MIL-STD-202, METHOD 106, LESS STEP 7b

CORROSION _____ MIL-STD-202, METHOD 101, COND. B (48 HOURS)

BAROMETRIC PRESSURE (ALTITUDE) _____ MIL-STD-202, METHOD 105, COND. C (70,000 FT.) (12~~0~~RMS)

5. MATERIAL

BODY AND COUPLING NUT _____ STAINLESS STEEL PER ASTM A 582, TYPE 303, COND. A

CONTACT AND RETAINING RING _____ BERYLLIUM COPPER PER ASTM B 196/B, 196M-03, COPPER ALLOY No. UNS C 17300, TEMPER TD04

INSULATOR _____ TEFLON PER ASTM D 1710-02, TYPE 1, GRADE 1, CLASS B.

GASKET _____ SILICONE RUBBER PER ZZ-R-765, CLASS IIB, GRADE 50 OR 60.

6. FINISH

BODY _____ GOLD PER ASTM B 488, TYPE 1, CODE C, CLASS 1.27 (.000050 MIN. THK.) OVER NICKEL PER QQ-N-290, CLASS 1 (.000150 MIN. THK.) OVER NICKEL (WOODS OR WATTS), (.000010 MIN. THK.).

COUPLING NUT _____ PASSIVATE PER AMS-2700, TYPE 2, CLASS 4

CONTACT _____ GOLD PER ASTM B 488, TYPE 1, CODE C, CLASS 1.27 (.000050 MIN. THK.) OVER NICKEL PER QQ-N-290, (.000050 MIN. THK.) OVER COPPER PER MIL-C-14550 (.000010 MIN. THK.).

INSULATOR, GASKET AND RETAINING RING _____ N/A