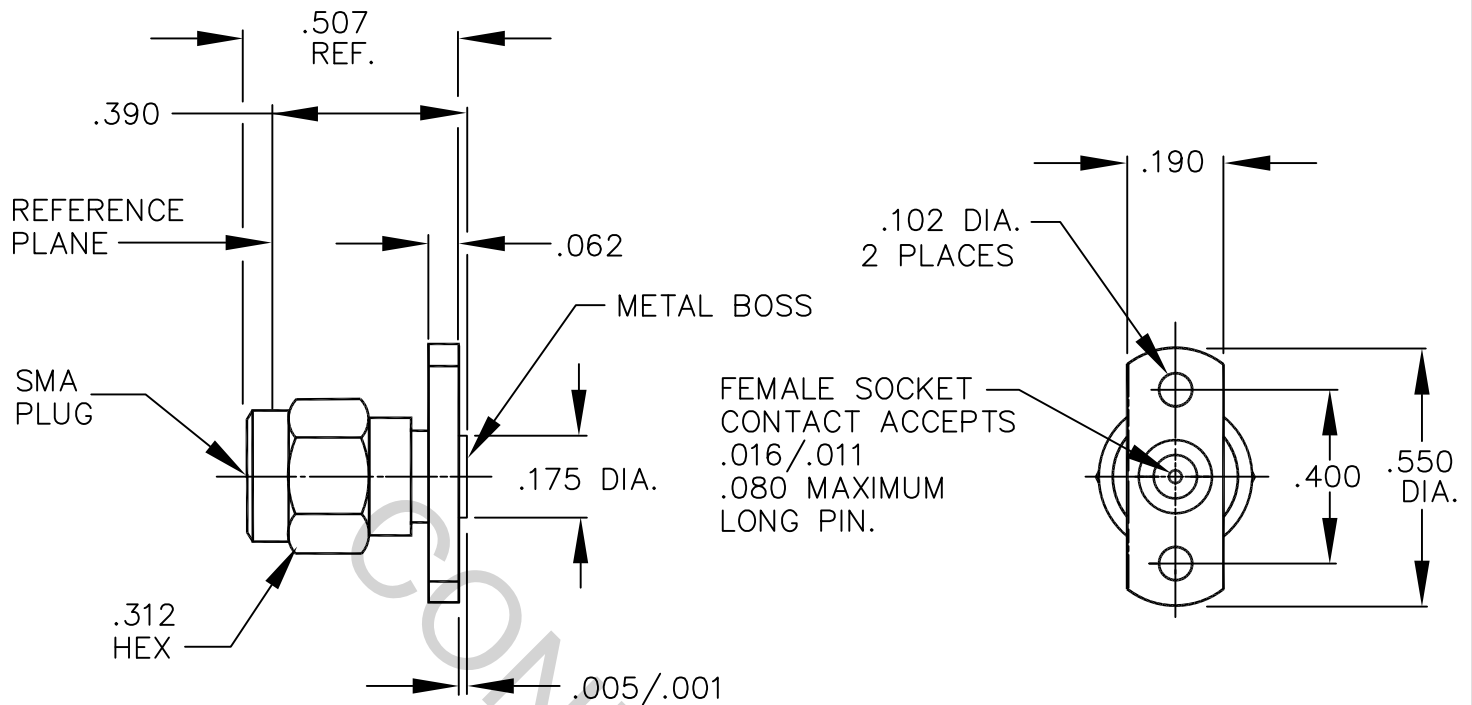


# SPECIFICATION CONTROL DRAWING



1. MATING INTERFACE DIMENSIONS FOR SMA PLUG per MIL-STD-348 (Fig. 310-1).

## 2. ELECTRICAL

|   |       |                    |
|---|-------|--------------------|
| FREQUENCY RANGE GHz                         | _____ | DC TO 26.5 GHz     |
| VSWR (MAX.) *                               | _____ | 1.05 + .006 x FGHz |
| INSERTION LOSS (dB MAX.) *                  | _____ | .04 dB x FGHz      |
| NOMINAL IMPEDANCE (OHMS)                    | _____ | 50                 |
| VOLTAGE RATING (MAX. VRMS)                  | _____ | 250                |
| RF LEAKAGE (MIN. dB DOWN)                   | _____ | 100 dB - FGHz      |
| TEMPERATURE RATING (DEGREES CENTIGRADE)     | _____ | -65°c TO + 165 °c  |
| DIELECTRIC WITHSTANDING VOLTAGE (MAX. VRMS) | _____ | 750                |
| INSULATION RESISTANCE (MIN. MEGOHMS)        | _____ | 10,000             |
| CONTACT RESISTANCE                          |       |                    |
| • CENTER CONTACT (MAX. MILLIOHMS)           | _____ | 3.0                |
| • OUTER CONTACT (MAX. MILLIOHMS)            | _____ | 2.0                |

\*TERMINATED IN A 50 OHM LOAD

This Document contains proprietary and confidential information.

**RoHS**  
COMPLIANT

| REV. | DCN NO. | DATE    | APP. | DIMENSIONS ARE IN INCHES<br>TOLERANCES             |                    |                                       | <br>HAVERHILL MA. 01835                                  |
|------|---------|---------|------|--|--------------------|---------------------------------------|--|
|      |         |         |      | DECIMALS<br>.X ± .030<br>.XX ± .010<br>.XXX ± .005 | FRACTIONAL<br>±/64 | ANGULAR<br>X ° ± 1 0'<br>X ° X' ± 15' |  |
| AA   | 03-1903 | 7/16/03 | DC   |  |                    |                                       | TITLE<br>SMA, PLUG<br>2 HOLE FLANGE<br>FILED REPLACEABLE |
| AB   | 18-1502 | 5/8/18  | DC   |  |                    |                                       |  |
|      |         |         |      | DRAWN  | G.E.               | DATE 7/15/03                          |  |
|      |         |         |      | APPROVED   | DC                 | DATE 7/15/03                          |  |
|      |         |         |      | CODE IDENT.  |                    |                                       | DWG. NO. 9852-0881-6214                                  |
|      |         |         |      | 2J899  | SHEET 1 OF 2       |                                       |  |

# SPECIFICATION CONTROL DRAWING

## 3. MECHANICAL

### CAPTIVATION-CENTER CONTACT

MAX.AXIAL FORCE \_\_\_\_\_ 6.0 LBS.

MAX. RADIAL TORQUE \_\_\_\_\_ N/A

### CENTER CONTACT AXIAL FORCES

● INSERTION (MAX. OUNCES) \_\_\_\_\_ INTERFACE 48.0 OZ. / FLANGE END 32.0 OZ.

● WITHDRAWAL (MIN. OUNCES) \_\_\_\_\_ INTERFACE 2.0 OZ. / FLANGE END 1.0 OZ.

CONNECTOR ENGAGEMENT/DISENGAGEMENT (MAX. IN. LBS.) \_\_\_\_\_ 2.0

CONNECTOR DURABILITY (MIN. CYCLES) \_\_\_\_\_ 500

RECOMMENDED MATING TORQUE \_\_\_\_\_ 7 - 10 IN. LBS.

## 4. ENVIRONMENTAL

TEMPERATURE CYCLING \_\_\_\_\_ MIL-STD-202, METHOD 102, COND. C ( -65 °c TO + 200°c )

SHOCK \_\_\_\_\_ MIL-STD-202, METHOD 213, COND. I (100 G's)

VIBRATION \_\_\_\_\_ MIL-STD-202, METHOD 204, COND. D (20 G's)

MOISTURE RESISTANCE \_\_\_\_\_ MIL-STD-202, METHOD 106, LESS STEP 7b

CORROSION \_\_\_\_\_ MIL-STD-202, METHOD 101, COND. B (48 HOURS)

BAROMETRIC PRESSURE (ALTITUDE) \_\_\_\_\_ MIL-STD-202, METHOD 105, COND. C ( 70,000 FT. ) ( 190 VRMS )

## 5. MATERIAL

BODY AND COUPLING NUT \_\_\_\_\_ STAINLESS STEEL PER ASTM-A-582, TYPE 303, COND. A

CONTACT AND RETAINING RING \_\_\_\_\_ BERYLLIUM COPPER PER ASTM B 196/B, 196M-03, COPPER ALLOY No. UNS C 17300, TEMPER TD04

INSULATOR \_\_\_\_\_ TEFLON PER ASTM D 1710-02, TYPE 1, GRADE 1, CLASS B.

GASKET \_\_\_\_\_ SILICONE RUBBER per ZZ-R-765  
CLASS IIB, GRADE 50 or 60.

## 6. FINISH

BODY AND COUPLING NUT \_\_\_\_\_ PASSIVATE PER AMS-2700, TYPE 2, CLASS 4

CONTACT \_\_\_\_\_ GOLD PER ASTM B 488, TYPE 1, CODE C, CLASS 1.27  
(.000050 MIN. THK.) OVER NICKEL PER QQ-N-290,  
(.000050 MIN. THK.) OVER COPPER PER AMS-2418  
(.000010 MIN. THK.) .

INSULATOR, GASKET AND RETAINING RING \_\_\_\_\_ N/A