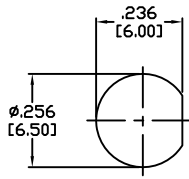
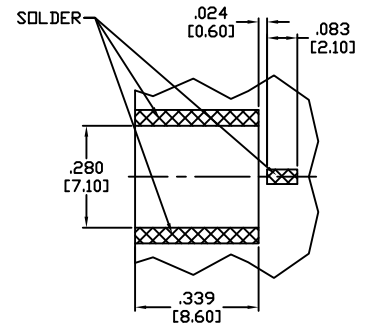
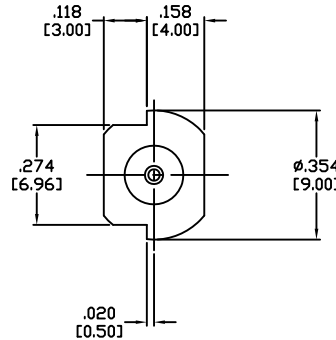
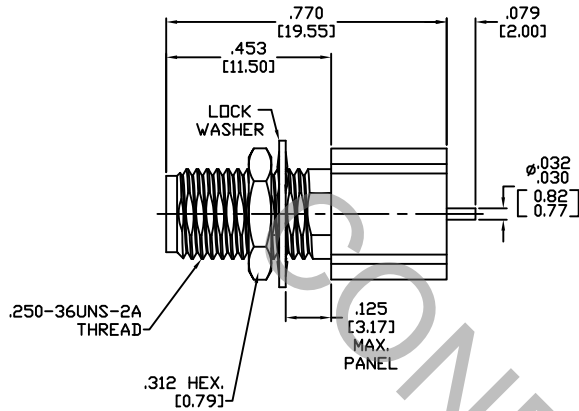


SPECIFICATION CONTROL DRAWING



RECOMMENDED MOUNTING HOLE



RECOMMENDED SOLDERING AREA

1. MATING INTERFACE DIMENSIONS Per MIL-STD-348A, Fig. 310.2 (SMA JACK)

2. ELECTRICAL

FREQUENCY RANGE GHz	_____	DC TO 18.0 GHz.
VSWR (MAX) *	_____	N/A
INSERTION LOSS (dB MAX) *	_____	.05 dB x \sqrt{FGHz} .
NOMINAL IMPEDANCE (OHMS)	_____	50
VOLTAGE RATING (MAX. VRMS)	_____	250
RF LEAKAGE (MIN. dB DOWN)	_____	-100 dB - FGHz.
TEMPERATURE RATING (DEGREES CENTIGRADE)	_____	-65 ° c TO +165 ° c
DIELECTRIC WITHSTANDING VOLTAGE (MAX. VRMS)	_____	750
INSULATION RESISTANCE (MIN. MEGOHMS)	_____	5,000
CONTACT RESISTANCE		
• CENTER CONTACT (MAX. MILLIOHMS)	_____	3.0
• OUTER CONTACT (MAX. MILLIOHMS)	_____	2.0

* TERMINATED IN A 50 OHM LOAD

RoHS
COMPLIANT

This Document contains proprietary and confidential information.

REV.	DCN NO.	DATE	APP.	DIMENSIONS ARE IN INCHES TOLERANCES			 HAVERHILL, MA 01835
AA	17-2218	10/18/17	TS	DECIMALS .X ± .030 .XX ± .010 .XXX ± .005	FRACTIONAL ± 1/64	ANGULAR X ° ± 1° 0' X ° X' ± 15'	
				SURFACE ROUGHNESS 63 ✓ MIL-STD 10.			
				DRAWN TS	DATE 10/17/17	TITLE SMA BULKHEAD JACK, EDGE LAUNCH, STRAIGHT, P.C. MOUNT PIN TERMINAL	
				APPROVED DC	DATE 10/17/17		
				CODE IDENT. 2J899	SHEET 1 OF 2	DWG. NO. 9910-0031-2407	

SPECIFICATION CONTROL DRAWING

3. MECHANICAL

CAPTIVATION-CENTER CONTACT

- MIN. AXIAL FORCE _____ 4.5 LBS.
- MIN. RADIAL TORQUE _____ N/A

CONNECTOR ENGAGEMENT FORCES

- INSERTION (MAX. OUNCES) _____ 48.0
- WITHDRAWAL (MIN. OUNCES) _____ 2.0

CONNECTOR DURABILITY (MIN. MATING) _____ 500

4. ENVIRONMENTAL

TEMPERATURE CYCLING _____ MIL-STD-202, METHOD 102, COND. C (-65 ° c TO + 200 ° c)

SHOCK _____ MIL-STD-202, METHOD 213, COND. I (100 G's)

VIBRATION _____ MIL-STD-202, METHOD 204, COND. D (20 G's)

MOISTURE RESISTANCE _____ MIL-STD-202, METHOD 106, LESS STEP 7b

CORROSION _____ MIL-STD-202, METHOD 101, COND. B (48 HOURS)

BAROMETRIC PRESSURE (ALTITUDE) _____ MIL-STD-202, METHOD 105, COND. C (70,000 FT.) (188 VRMS)

5. MATERIAL

CONNECTOR BODY _____ BRASS PER ASTM B36, TEMPER H02, ALLOY C36000

CENTER CONTACT _____ BERYLLIUM COPPER PER ASTM-B-196/B, 196M-03, COPPER ALLOY No. UNS-C17300, TEMPER TD04.

INSULATOR _____ TEFLON PER ASTM-D-1710-02, TYPE 1, GRADE 1, CLASS B.

6. FINISH

CONNECTOR BODY _____ GOLD PER ASTM-B-488, TYPE I, CODE C, CLASS 0.70
(.000030 MIN. THK.) OVER NICKEL PER SAE AMS QQ-N-290, CLASS 1
(.000050 MIN. THK.) OVER COPPER PER AMS 2418 (.000040 MIN. THK.)

CENTER CONTACT _____ GOLD PER ASTM-B-488, TYPE I, CODE C, CLASS 1.25
(.000050 MIN. THK.) OVER NICKEL PER SAE AMS QQ-N-290, CLASS 1
(.000050 MIN.) OVER COPPER PER AMS 2418 (.000010 MIN.)

INSULATOR _____ N/A