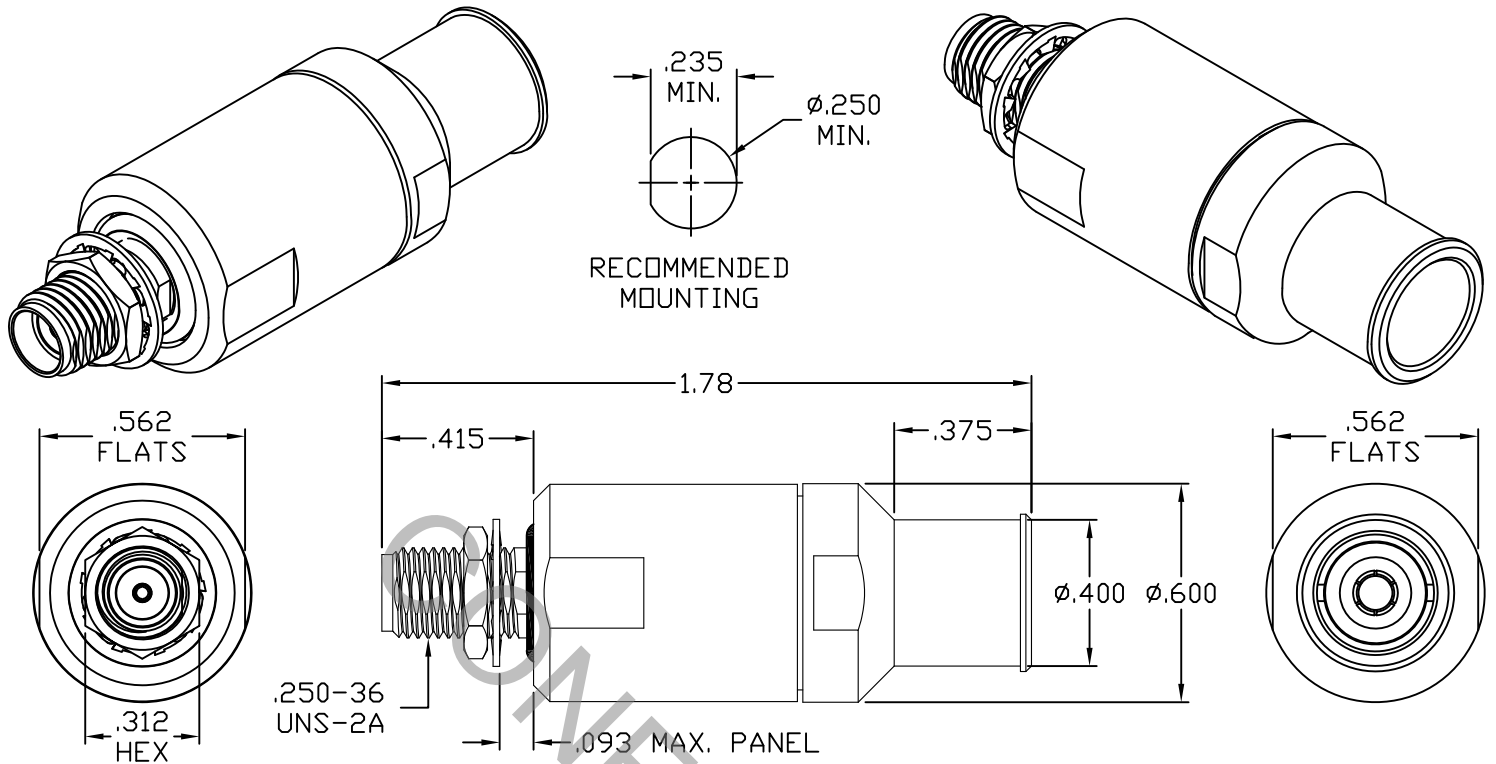


SPECIFICATION CONTROL DRAWING



1. MATING INTERFACE DIMENSIONS Per MIL-STD-348 Fig. 310.2 (SMA JACK).

2. ELECTRICAL

FREQUENCY RANGE GHz	_____	DC TO 26.5 GHz
VSWR (MAX) *	_____	1.05 + .005 x FGHz
INSERTION LOSS (dB MAX) *	_____	.04 dB x $\sqrt{\text{FGHz}}$
NOMINAL IMPEDANCE (OHMS)	_____	50
VOLTAGE RATING (MAX. VRMS)	_____	333
RF LEAKAGE (MIN. dB DOWN)	_____	-100 dB - FGHz
TEMPERATURE RATING (DEGREES CENTIGRADE)	_____	-65°c TO + 165°c
DIELECTRIC WITHSTANDING VOLTAGE (MAX. VRMS)	_____	1,000
INSULATION RESISTANCE (MIN. MEGOHMS)	_____	5,000
CONTACT RESISTANCE		
• CENTER CONTACT (MAX. MILLIOHMS)	_____	6.0
• OUTER CONTACT (MAX. MILLIOHMS)	_____	2.0

* TERMINATED IN A 50 OHM LOAD

RoHS
COMPLIANT

This Document contains proprietary and confidential information.

REV.	DCN NO.	DATE	APP.	DIMENSIONS ARE IN INCHES TOLERANCES			CABLE INCORPORATED HAVERHILL, MA 01835	
AA	12-1595	7/24/12	TS	DECIMALS .X ± .030 .XX ± .010 .XXX ± .005	FRACTIONAL ± 1/64	ANGULAR X ° ± 1° 0' X ° X' ± 15'	TITLE SMA JACK BULKHEAD, SOLDER CLAMP, PLUG-IN FOR T7-00065 LOW LOSS CABLE	
AB	12-1729	8/24/12	DC					
AC	12-2081	8/2/13	DC					
				DRAWN	TS	DATE	7/24/12	
				APPROVED	RT	DATE	7/24/12	
				CODE IDENT.			SHEET 1 OF 2	DWG. NO. 9910-7065-6240
				6DZL5				

SPECIFICATION CONTROL DRAWING

3. MECHANICAL

CAPTIVATION-CENTER CONTACT

MAX. AXIAL FORCE	6.0 LBS.
MAX. RADIAL TORQUE	N/A
CENTER CONTACT AXIAL FORCES	
● INSERTION (MAX. OUNCES)	INTERFACE 32.0
● WITHDRAWAL (MIN. OUNCES)	INTERFACE 2.0
CONNECTOR ENGAGEMENT/DISENGAGEMENT (MAX. LBS.)	2.0
CONNECTOR DURABILITY (MIN. CYCLES)	500
RECOMMENDED MATING TORQUE	7 - 10 IN. LBS.
RECOMMENDED MOUNTING TORQUE	18 - 22 IN. LBS.

4. ENVIRONMENTAL

THERMAL SHOCK	MIL-STD-202, METHOD 107, COND. B (-65° c TO + 165° c)
SHOCK	MIL-STD-202, METHOD 213, COND. I (100 G's)
VIBRATION	MIL-STD-202, METHOD 204, COND. D (20 G's)
MOISTURE RESISTANCE	MIL-STD-202, METHOD 106, LESS STEP 7b
CORROSION	MIL-STD-202, METHOD 101, COND. B (48 HOURS)
BAROMETRIC PRESSURE (ALTITUDE)	MIL-STD-202, METHOD 105, COND. C (70,000 FT.) (190 VRMS)

5. MATERIAL

BODY, BUSHINGS, HEX NUT & CLAMP NUT	STAINLESS STEEL PER ASTM-A-582, TYPE 303, COND. A
LOCKWASHER	400 SERIES STAINLESS STEEL
CONTACT	BERYLLIUM COPPER PER ASTM-B-196/B, 196M-03, COPPER ALLOY No. UNS-C17300, TEMPER TD04.
INSULATORS	TEFLON PER ASTM-D-1710-02, TYPE 1, GRADE 1, CLASS B.
SOLDER SLEEVE	BRASS PER ASTM-B-16, TEMPER H02, ALLOY C36000.
O-RING	SILICONE RUBBER PER ZZ-R-785E, CLASS 1 OR ASM-3304.

6. FINISH

BODY, BUSHINGS, HEX NUT, LOCKWASHER & CLAMP NUT	PASSIVATE PER AMS 2700, TYPE 2, CLASS 4.
SOLDER SLEEVE	GOLD PER ASTM-B-488, TYPE I, CODE C, CLASS 1.27 (.000050 MIN. THK.) OVER NICKEL PER SAE AMS QQ-N-290, CLASS 1 (.000150 MIN. THK.) OVER COPPER PER AMS 2418 (.000010 MIN. THK.)
CONTACT	GOLD PER ASTM-B-488, TYPE I, CODE C, CLASS 1.27 (.000050 MIN. THK.) OVER NICKEL PER SAE AMS QQ-N-290, CLASS 1 (.000050 MIN. THK.) OVER COPPER PER AMS 2418 (.000010 MIN. THK.)
INSULATORS & O-RING	N/A