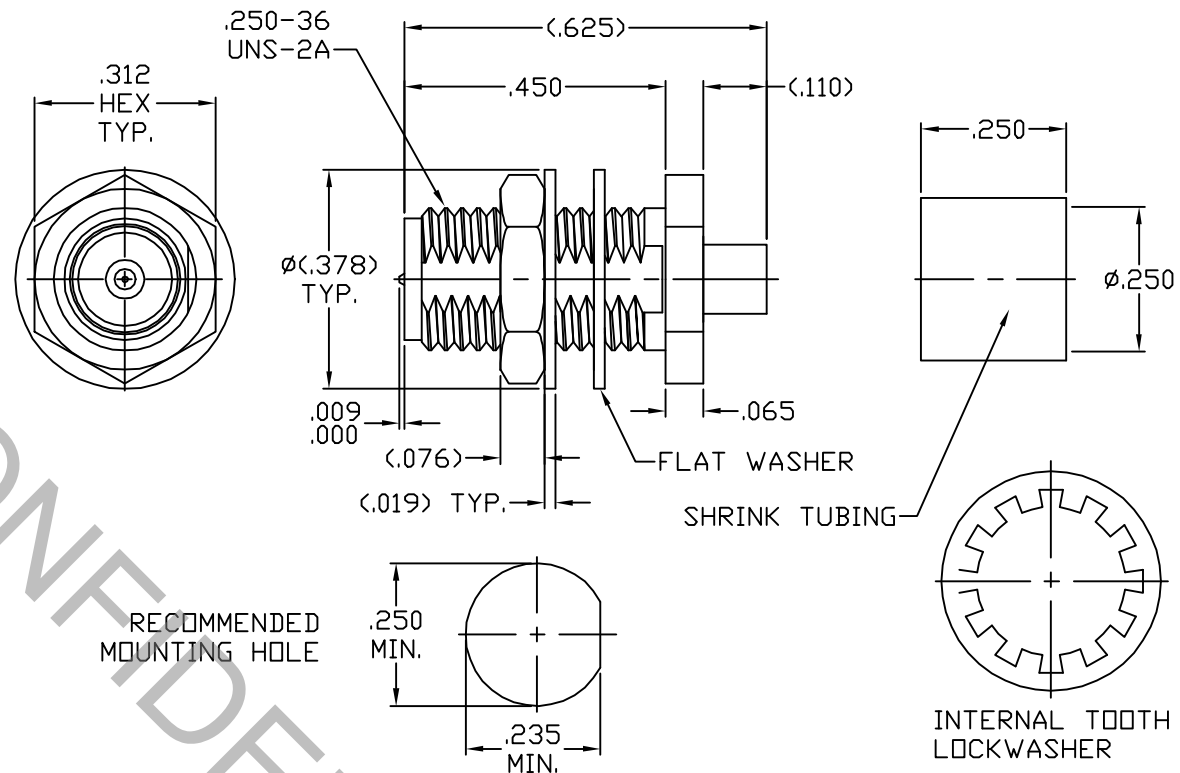


CONNECTOR SERIES: : SMA, POLARIZED  
 CENTER CONTACT: : MALE PIN  
 NOMINAL IMPEDANCE: (OHMS) : 50  
 CABLE ACCOMMODATION: : BELDEN 1671A  
 : Ø.085 S/R  
 : T-FLEX-405  
 CONTACT CAPTIVATION: : N/A  
 CABLE ATTACHMENT: : SOLDER  
 CONTACT ATTACHMENT: : SOLDER  
 FREQUENCY RANGE: : DC TO 6.0 GHz.  
 QPL SPECIFICATION: : N/A  
 QPL EQUIVALENT: : N/A

MATING CHARACTERISTICS : FCC SMA JACK  
 MATING TORQUE : 5 TO 7 POUND INCHES  
 MOUNTING TORQUE : N/A  
 TEMPERATURE RANGE : -55 / +125 DEGREES C.

ELECTRICAL:  
 VSWR MAXIMUM : 1.06 x F<sup>.05</sup> (F IN GHz.)  
 INSERTION LOSS MAXIMUM : .040 x √FGHz.  
 R.F. LEAKAGE MINIMUM : -100 dB  
 INSULATION RESISTANCE : 5,000 MEGOHMS MIN.  
 D.W.V. : 750 VRMS MAX.



ITEM	MATERIALS	FINISHES
BODY	: BRASS PER ASTM-B-16	: NICKEL PER QQ-N-290
LOCKNUT	: BRASS PER ASTM-B-16	: NICKEL PER QQ-N-290
LOCKWASHER	: PHOSPHOR BRONZE	: NICKEL PER QQ-N-290
FLAT WASHER	: BRASS PER ASTM-B-16	: NICKEL PER QQ-N-290
INSULATOR	: PTFE PER ASTM-D-1710	: N/A
CONTACT	: BRASS PER ASTM-B-16	: GOLD PER ASTM-B-488

REV.	DCN NUMBER	DATE	APP.
AA	04-1940	8/10/04	DC

## SPECIFICATION CONTROL DRAWING

DECIMALS	FRACTIONAL	DEGREES
.X ±.030		X°10'
.XX ±.010	± 1/16"	X°X' ±15'
.XXX ±.005		

DRAWN: DC		DATE: 8/9/04
APPROVED: DC		DATE: 8/9/04
SCALE	CODE IDENT	SHEET
N/A	2J899	1 of 1

**dynawave**  
 INCORPORATED  
 Haverhill, MA. 01835

TITLE  
**SMA BULKHEAD JACK,  
 POLARIZED, DIRECT  
 SOLDER, Ø.085 SEMI-RIGID**

DRAWING  
 NO. **9910-8520-2701**