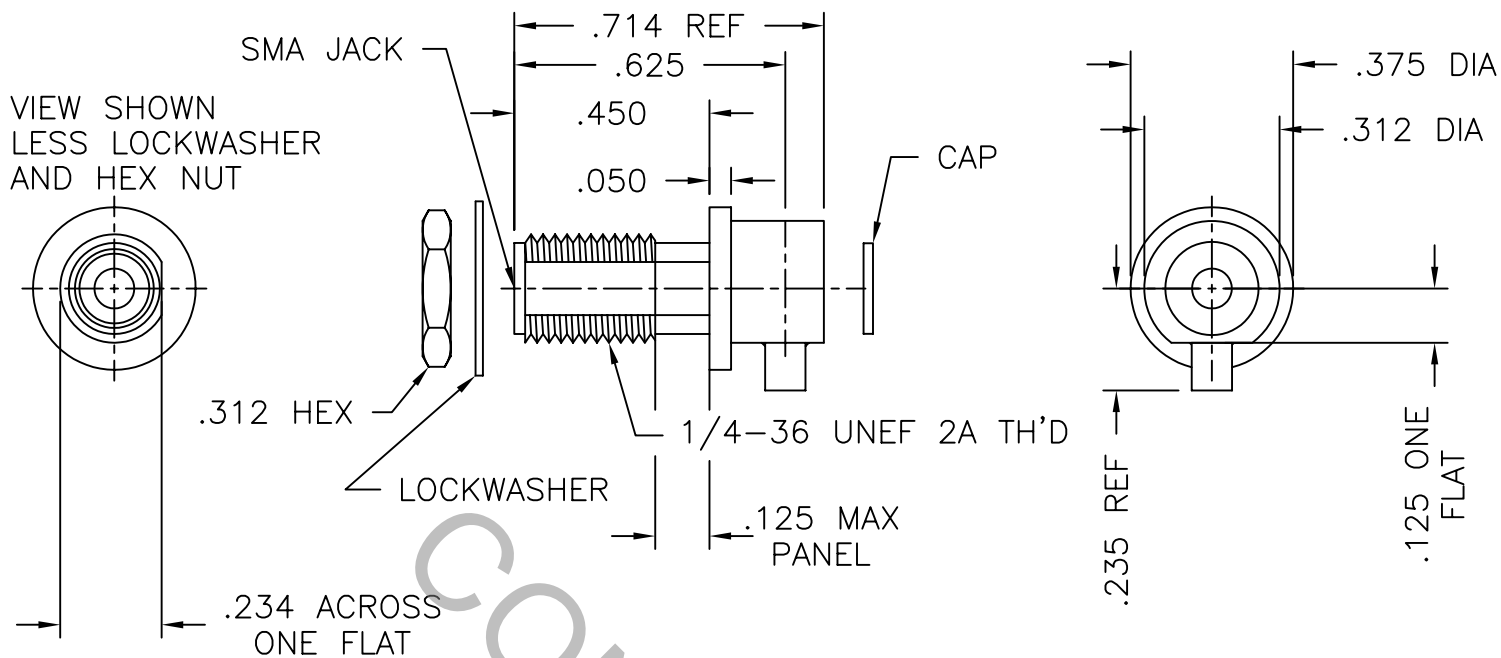


SPECIFICATION CONTROL DRAWING



1. MATING INTERFACE DIMENSIONS FOR SMA JACK per MIL-STD-348 (Fig. 310-2).

2. ELECTRICAL

FREQUENCY RANGE GHz	_____	DC TO 8 GHz.
VSWR (MAX.) *	_____	1.30:1 MAX
INSERTION LOSS (dB MAX.)	_____	.2db MAX
NOMINAL IMPEDANCE (OHMS)	_____	50
VOLTAGE RATING (MAX. VRMS)	_____	250
RF LEAKAGE (MIN. dB DOWN)	_____	100 dB - FGHz
TEMPERATURE RATING (DEGREES CENTIGRADE)	_____	-65°c TO + 165 °c
DIELECTRIC WITHSTANDING VOLTAGE (MAX. VRMS)	_____	500
INSULATION RESISTANCE (MIN. MEGOHMS)	_____	10,000
CONTACT RESISTANCE		
• CENTER CONTACT (MAX. MILLIOHMS)	_____	6.0
• OUTER CONTACT (MAX. MILLIOHMS)	_____	2.0

*TERMINATED IN A 50 OHM LOAD

REV.	DCN NO.	DATE	APP.	DIMENSIONS ARE IN INCHES TOLERANCES			HAVERHILL, MA. 01835
				DECIMALS	FRACTIONAL	ANGULAR	
AA	98-0865	9/16/98	AJH	.X ± .030 .XX ± .010 .XXX ± .005	±/64	X ° ± P 0' X ° X' ± 15'	
AB	98-0911	9/21/98	AJH				
				DRAWN	K.D.	DATE 9/16/98	TITLE SMA, R'ANGLE B'HEAD JACK FOR .047 SEMI RIGID CABLE
				APPROVED	A.J.H.	DATE 9/16/98	
				CODE IDENT.			DWG. NO. 9911-4729-3400
				2J899	SHEET 1 OF 2		

SPECIFICATION CONTROL DRAWING

3. MECHANICAL

CAPTIVATION-CENTER CONTACT

MAX.AXIAL FORCE _____ 6.0 LBS.

MAX. RADIAL TORQUE _____ N/A

CENTER CONTACT AXIAL FORCES

● INSERTION (MAX. OUNCES) _____ 48.0

● WITHDRAWAL (MIN. OUNCES) _____ 2.0

CONNECTOR ENGAGEMENT/DISENGAGEMENT (MAX. IN. LBS.) _____ 2.0

CONNECTOR DURABILITY (MIN. CYCLES) _____ 500

RECOMMENDED MATING TORQUE _____ 7 - 10 IN. LBS.

4. ENVIRONMENTAL

TEMPERATURE CYCLING _____ MIL-STD-202, METHOD 102, COND. C (-65 °c TO + 200°)

SHOCK _____ MIL-STD-202, METHOD 213, COND. I (100 G's)

VIBRATION _____ MIL-STD-202, METHOD 204, COND. D (20 G's)

MOISTURE RESISTANCE _____ MIL-STD-202, METHOD 106, LESS STEP 7b

CORROSION _____ MIL-STD-202, METHOD 101, COND. B (48 HOURS)

BAROMETRIC PRESSURE (ALTITUDE) _____ MIL-STD-202, METHOD 105, COND. C (70,000 FT.) (190RMS)

5. MATERIAL

BODY AND HEX NUT _____ STAINLESS STEEL PER ASTM A 581, TYPE 303, COND. A

CONTACT _____ BERYLLIUM COPPER PER ASTM B196-90, COPPER ALLOY
No. UNS-C17300, TEMPER TD04.

INSULATOR _____ TEFLON PER ASTM D 4894-91.

CAP _____ BRASS PER ASTM B16

LOCKWASHER _____ PHOSPHER BRONZE

6. FINISH

BODY AND HEX NUT _____ GOLD per MIL-G-45204, TYPE II, GRADE C, CLASS 0
(.000025 Minimum Thickness) OVER NICKEL per
QQ-N-290, CLASS 1 (.00005 Minimum Thickness) OVER
WOODS NICKEL (.000010 Minimum Thickness).

CONTACT _____ GOLD per MIL-G-45204, TYPE II, GRADE C, CLASS 2
(.000100 Minimum Thickness) OVER NICKEL per
QQ-N-290, CLASS 1 (.000100 Minimum Thickness) OVER
COPPER per MIL-C-14550 (.000010 Minimum Thickness).

CAP AND LOCKWASHER _____ GOLD per MIL-G-45204, TYPE II, GRADE C, CLASS 1
(.00005 Minimum Thickness) OVER NICKEL per
MIL-P27418. (.00015 Minimum Thickness) OVER
WOODS NICKEL (.000010 Minimum Thickness).

INSULATOR _____ N/A