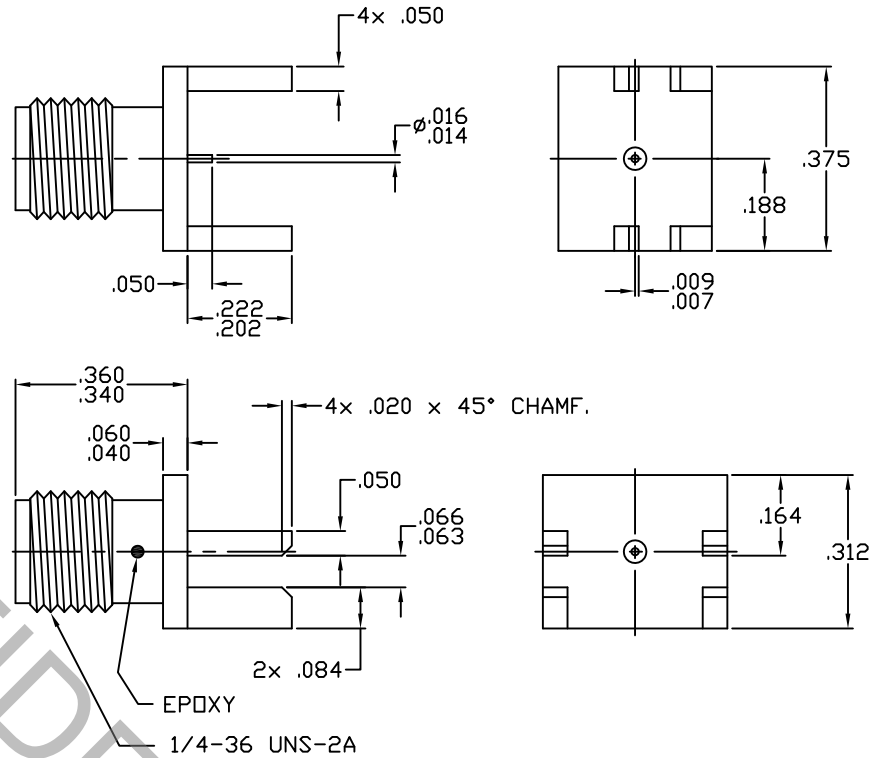


CONNECTOR SERIES: : SMA
 CENTER CONTACT: : FEMALE SOCKET
 NOMINAL IMPEDANCE: (OHMS) : 50
 CABLE ACCOMMODATION: : N/A

CONTACT CAPTIVATION: : 6.0 LBS
 PCB ATTACHMENT: : SOLDER
 CONTACT ATTACHMENT: : SOLDER
 FREQUENCY RANGE: : DC TO 20.0 GHz.
 QPL SPECIFICATION: : N/A
 QPL EQUIVALENT: : N/A

MATING CHARACTERISTICS : MIL-STD-348-310.2
 MATING TORQUE : 7 TO 10 POUND INCHES
 MOUNTING TORQUE : N/A
 TEMPERATURE RANGE : -65 / +165 DEGREES C.

ELECTRICAL:
 VSWR MAXIMUM : 1.20 +.010 x FGHz.
 INSERTION LOSS MAXIMUM : .05 dB x FGHz.
 R.F. LEAKAGE MINIMUM : -100 dB - FGHz.
 INSULATION RESISTANCE : 5,000 MEGOHMS MIN.
 D.W.V. : 1000 VRMS MAX.



ITEM	MATERIALS	FINISHES
BODY	: BRASS PER ASTM-B-36	: TRI-METAL PLATE
INSULATOR	: PTFE PER ASTM-D-1710	: N/A
CONTACT	: COPPER, BERYLLIUM PER ASTM-B196	: TRI-METAL PLATE

REV.	DCN NUMBER	DATE	APP.
AA	04-1138	2/2/04	DC
AB	14-2078	8/28/14	DC

SPECIFICATION CONTROL DRAWING



TITLE **SMA JACK STR,
PCB MOUNT,
PIN TERMINAL**

DRAWING NO. **9920-0032-2104**

TOLERANCES		DRAWN: DC	DATE: 2/2/04
DECIMALS	FRACTIONAL	APPROVED: DC	DATE: 2/2/04
.X ±.030		SCALE	CODE IDENT
.XX ±.010	± 1/16"	N/A	2J899
.XXX ±.005		SHEET	1 of 1