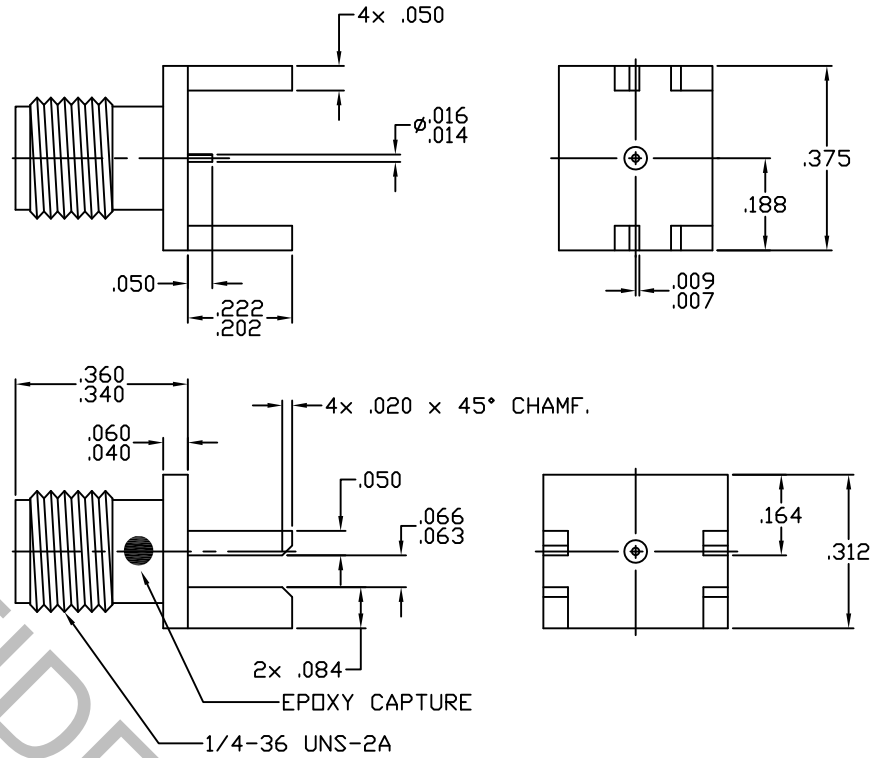


CONNECTOR SERIES: : SMA  
 CENTER CONTACT: : FEMALE SOCKET  
 NOMINAL IMPEDANCE: (OHMS) : 50  
 CABLE ACCOMMODATION: : N/A

CONTACT CAPTIVATION: : 6.0 LBS  
 PCB ATTACHMENT: : SOLDER  
 CONTACT ATTACHMENT: : SOLDER  
 FREQUENCY RANGE: : DC TO 20.0 GHz.  
 QPL SPECIFICATION: : N/A  
 QPL EQUIVALENT: : N/A

MATING CHARACTERISTICS : MIL-STD-348-310.2  
 MATING TORQUE : 7 TO 10 POUND INCHES  
 MOUNTING TORQUE : N/A  
 TEMPERATURE RANGE : -65 / +165 DEGREES C.

ELECTRICAL:  
 VSWR MAXIMUM : 1.20 +.010 x FGHz.  
 INSERTION LOSS MAXIMUM : .05 dB x FGHz.  
 R.F. LEAKAGE MINIMUM : -100 dB - FGHz.  
 INSULATION RESISTANCE : 5,000 MEGOHMS MIN.  
 D.W.V. : 1000 VRMS MAX.



ITEM	MATERIALS	FINISHES
BODY	: BRASS PER ASTM-B-36	: GOLD PER ASTM B 488
INSULATOR	: PTFE PER ASTM-D-1710	: N/A
CONTACT	: COPPER, BERYLLIUM PER ASTM-B196	: GOLD PER ASTM B 488

REV.	DCN NUMBER	DATE	APP.
AA	04-1138	2/2/04	DC
AB	12-1196	3/6/12	TS
AC	15-2030	7/21/15	TS

## SPECIFICATION CONTROL DRAWING

TOLERANCES		DRAWN: DC	DATE: 2/2/04
DECIMALS	FRACTIONAL	APPROVED: DC	DATE: 2/2/04
.X ±.030		SCALE	CODE IDENT
.XX ±.010	± 1/16"	N/A	2J899
.XXX ±.005		SHEET	1 of 1



TITLE  
**SMA JACK  
 PCB EDGE MOUNT  
 PIN TERMINAL**

DRAWING  
 NO. **9920-0032-2404**