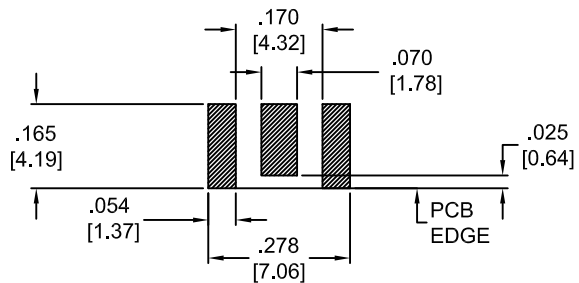
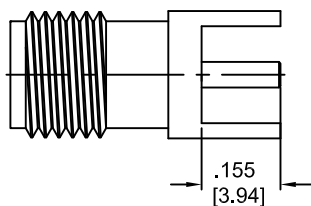
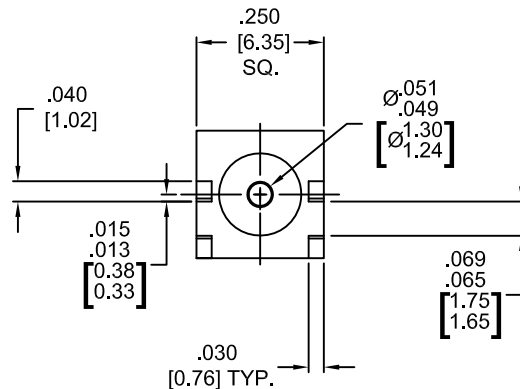
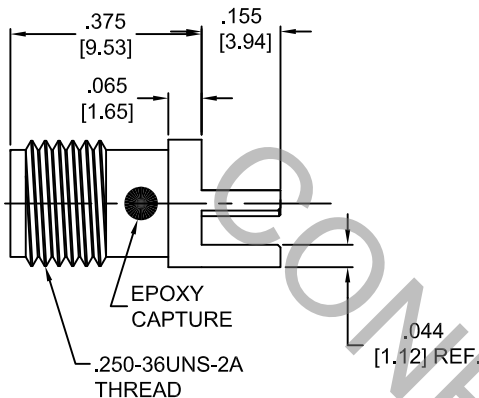


# SPECIFICATION CONTROL DRAWING



RECOMMENDED PC BOARD LAYOUT  
BOARD THICKNESS .062 [1.57] MAX.



1. MATING INTERFACE DIMENSIONS PER MIL-STD-348A Fig. 310.2 (SMA JACK)

2. ELECTRICAL

FREQUENCY RANGE GHz	_____	DC TO 18.0 GHz.
VSWR (MAX) *	_____	1.12 + .010 x FGHz.
INSERTION LOSS (dB MAX) *	_____	.05 dB x √FGHz
NOMINAL IMPEDANCE (OHMS)	_____	50
VOLTAGE RATING (MAX. VRMS)	_____	335
RF LEAKAGE (MIN. dB DOWN)	_____	-85DB - FGHz.
TEMPERATURE RATING (DEGREES CENTIGRADE)	_____	-65° c TO +125° c
DIELECTRIC WITHSTANDING VOLTAGE (MAX. VRMS)	_____	1,000
INSULATION RESISTANCE (MIN. MEGOHMS)	_____	10,000
CONTACT RESISTANCE		
• CENTER CONTACT (MAX. MILLIOHMS)	_____	3.0
• OUTER CONTACT (MAX. MILLIOHMS)	_____	2.0

\* TERMINATED IN A 50 OHM LOAD

**RoHS**  
COMPLIANT

REV.	DCN NO.	DATE	APP.	DIMENSIONS ARE IN INCHES TOLERANCES			 HAVERHILL MA. 01835
AA	13-1787	5/30/13	TS	DECIMALS .X ± .030 .XX ± .010 .XXX ± .005	FRACTIONAL ± 1/64	ANGULAR X° ± 1' 0" X° X' ± 15"	
				SURFACE ROUGHNESS 63 √ MIL-STD 10.			TITLE SMA, JACK, STRAIGHT EDGE MOUNT .062 PC BOARD THICKNESS STRAIGHT TERMINAL
				DRAWN TS	DATE 5/30/13		
				APPROVED DC	DATE 5/30/13		
				CODE IDENT. 2J899	SHEET 1 OF 2	DWG. NO. 9920-0032-2408	

# SPECIFICATION CONTROL DRAWING

## 3. MECHANICAL

### CAPTIVATION-CENTER CONTACT

- MIN. AXIAL FORCE \_\_\_\_\_ 6.0 LBS.
- MIN. RADIAL TORQUE \_\_\_\_\_ 4.0 IN.OZ.

### CONNECTOR ENGAGEMENT FORCES

- INSERTION (MAX. OUNCES) \_\_\_\_\_ 48.0
- WITHDRAWAL (MIN. OUNCES) \_\_\_\_\_ 2.0

CONNECTOR DURABILITY (MIN. MATING) \_\_\_\_\_ 500

## 4. ENVIRONMENTAL

TEMPERATURE CYCLING \_\_\_\_\_ MIL-STD-202, METHOD 102, COND. C ( -65 °c TO + 200 °c )

SHOCK \_\_\_\_\_ MIL-STD-202, METHOD 213, COND. I (100 G's)

VIBRATION \_\_\_\_\_ MIL-STD-202, METHOD 204, COND. D (20 G's)

MOISTURE RESISTANCE \_\_\_\_\_ MIL-STD-202, METHOD 106, LESS STEP 7b

CORROSION \_\_\_\_\_ MIL-STD-202, METHOD 101, COND. B (48 HOURS)

BAROMETRIC PRESSURE (ALTITUDE) \_\_\_\_\_ MIL-STD-202, METHOD 105, COND. C ( 70,000 FT. ) ( 250 VRMS )

## 5. MATERIAL

CONNECTOR BODY \_\_\_\_\_ BRASS PER ASTM B36, TEMPER H02, ALLOY C36000

CENTER CONTACT \_\_\_\_\_ BERYLLIUM COPPER PER ASTM-B-196/B, 196M-03, COPPER ALLOY No. UNS-C17300, TEMPER TD04.

INSULATOR \_\_\_\_\_ TEFLON PER ASTM D1710-02, TYPE 1, GRADE 1, CLASS B.

## 6. FINISH

CONNECTOR BODY \_\_\_\_\_ GOLD PER ASTM B488, TYPE I, GRADE C, CODE C, CLASS 1.25 (.000050 MIN. THK.) OVER NICKEL PER SAE-AMS-QQ-N-290, CLASS 1 (.000050 MIN. THK.) OVER COPPER PER AMS-2418 (.000010 MIN. THK.).

CENTER CONTACT \_\_\_\_\_ GOLD PER ASTM-B-488, TYPE I, CODE C, CLASS 1.27 (.000050 MIN. THK.) OVER NICKEL PER SAE-AMS-QQ-N-290 CLASS 1 (.000050 MIN. THK.) OVER COPPER PER AMS-2418 (.000010 MIN. THK.).

INSULATOR \_\_\_\_\_ N/A