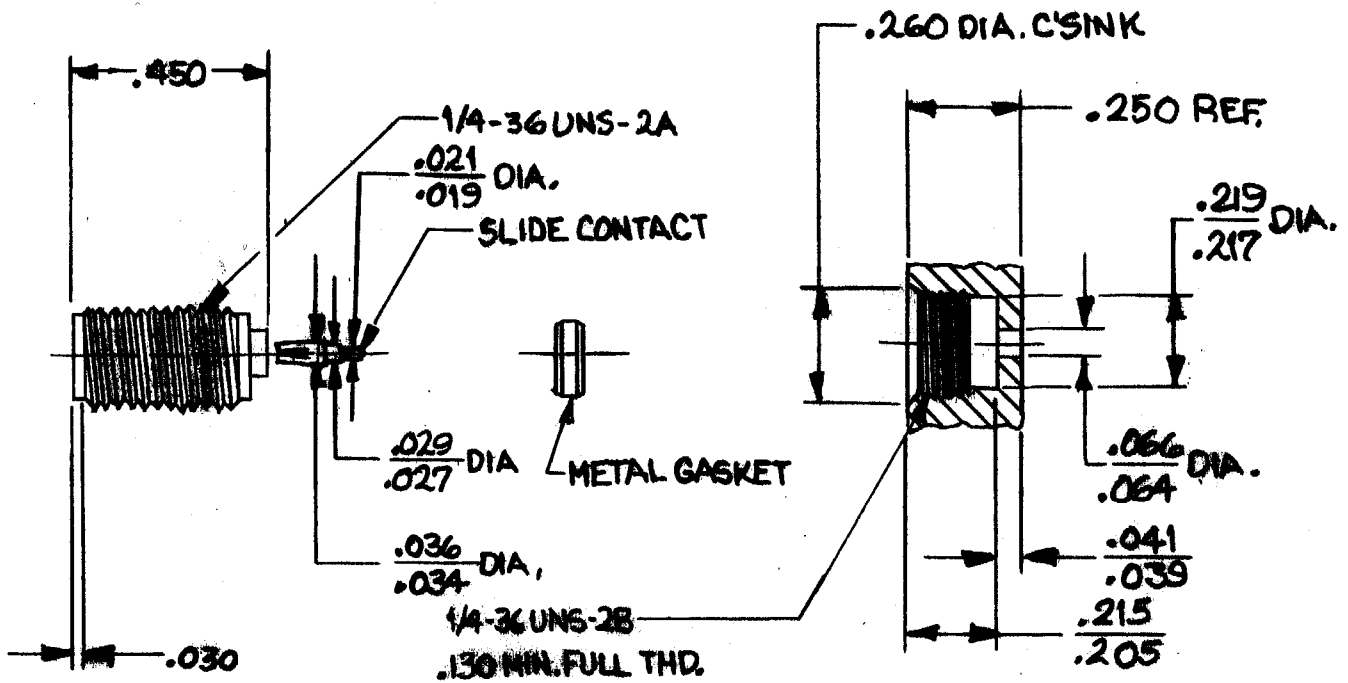


SPECIFICATION CONTROL DRAWING



1. MATING INTERFACE DIMENSIONS PER MIL-C-39012/SMA AND DYNAWAVE MD99

2. ELECTRICAL

Frequency Range GHz	-----	DC - 26.5 GHz
VSWR (max.)*	-----	1.05 + .006 x FGHz
Insertion Loss (dB max.)*	-----	.04 dB x $\sqrt{\text{FGHz}}$
Nominal Impedance (ohms)	-----	50
Voltage Rating (max. vrms)	-----	250
RF Leakage (min. dB down)	-----	100 dB - FGHz
Temperature Rating (degrees centigrade)	-----	-65°C TO +165°C
Dielectric Withstanding Voltage (max. vrms)	-----	750
Insulation Resistance (min. megohms)	-----	10,000
Contact Resistance		
• Center Contact (max. milliohms)	-----	12.0
• Outer Contact (max. milliohms)	-----	2.0

* Terminated in a 50 ohm load.

REV.	DCN. NO.	DATE	APP.	DIMENSIONS ARE IN INCHES TOLERANCES			INCORPORATED Georgetown, Md 01833
				DECIMALS X ± .030 .XX ± .010 .XXX ± .005	FRACTIONAL ± 1/64	ANGULAR X' ± 10' XX' ± 15'	
-	198	10/86	C.M.				
A	530	1/88	DGG				
				DRAWN	C.D.M.	DATE	10/86
				APPROVED	DGG	DATE	10/86
				SHEET <u>1</u> OF <u>2</u>			TITLE SMA JACK, HERMETICALLY SEALED, METAL GASKET, SLIDE CONTACT
							DWG. NO. 9930-0441-6420

SPECIFICATION CONTROL DRAWING

3. MECHANICAL

Captivation - Center Contact

- Min. Axial Force ----- 6.0 LBS.
- Min. Radial Torque ----- 2.0 IN. OZ.

Center Contact Axial Forces

- Insertion (max. ounces) ----- 48.0 INTERFACE; 32.0 SLIDE
- Withdrawl (min. ounces) ----- 2.0 INTERFACE; 1.5 SLIDE

Connector Engagement & Disengagement (max. In. lbs.) ----- 2.0

Connector Durability (min. cycles) ----- 500

Recommended Mating Torque

- INTERFACE ----- 7-10 IN. LBS.
- PACKAGE ----- 20-23 IN. LBS.

4. ENVIRONMENTAL

Temperature Cycling --- Mil-Std-202, Method 102, Cond. C (-65°c to + 200 °c)

Shock --- Mil-Std-202, Method 213, Cond. I (100 G's)

Vibration --- Mil-Std-202, Method 204, Cond. D (20 G's)

Moisture Resistance --- Mil-Std-202, Method 106, Less Step 7b

Corrosion --- Mil-Std-202, Method 101, Cond. B (48 hours)

Barometric Pressure

(Altitude) --- Mil-Std-202, Method 105, Cond. C (70,000ft.)(190 vrms)

HERMITICITY --- 1 x 10⁻⁸ cc/SEC.

5. MATERIAL

- BODY ----- STAINLESS STEEL PER AMS-5640, TYPE 303, COND. A
- CONTACT ----- BERYLLIUM COPPER PER QQ-C-530, ALLOY 173, COND. H.T.
- INSULATORS ----- TEFLON PER MIL-P-19468 & L-P-403, TYPE I
- GLASS ----- CORNING 7070
- GLASS, MALE PIN ----- KOVAR
- METAL GASKET ----- CARBON STEEL PER B1113, CASE HARDENED

6. FINISH

- BODY & GLASS, MALE PIN ----- GOLD PER MIL-G-45204, TYPE II, GRADE C, CLASS 1
OVER NICKEL PER QQ-N-290, .00015 MIN. THK.
- CONTACT ----- GOLD PER MIL-G-45204, TYPE II, GRADE C, CLASS 2
OVER COPPER PER MIL-C-14550, CLASS 4
- METAL GASKET ----- NICKEL PER MIL-C-26074, CLASS 1, (.0001 MIN. THK.)
OVER COPPER PER MIL-C-14550 (.0001 MIN. THK.)

dynawave
INCORPORATED
Georgetown, Ma 01833

SHEET 2 OF 2

DWG. NO. 9930-0441-6420

REV.
A