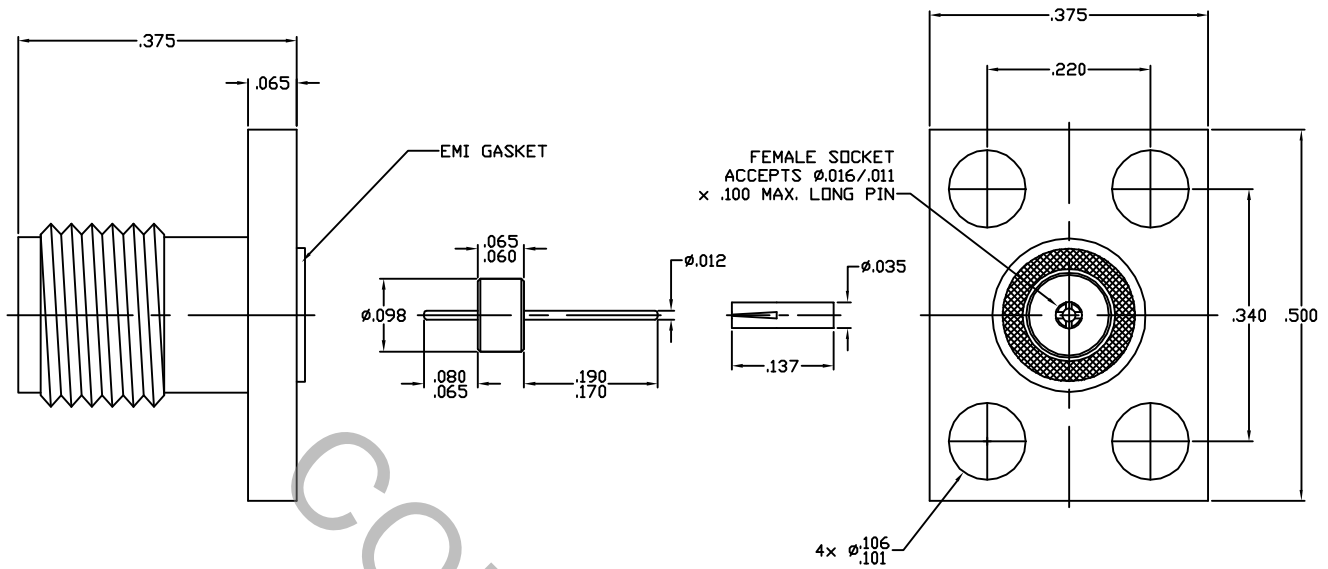


SPECIFICATION CONTROL DRAWING



1. MATING INTERFACE DIMENSIONS PER MIL-STD-348-310.2

2. ELECTRICAL

FREQUENCY RANGE GHz	_____	DC TO 26.5 GHz
VSWR (MAX.) *	_____	1.05 + .006 x FGHz
INSERTION LOSS (dB MAX.)	_____	.03 dB x $\sqrt{\text{FGHz}}$
NOMINAL IMPEDANCE (OHMS)	_____	50
VOLTAGE RATING (MAX. VRMS)	_____	250
RF LEAKAGE (MIN. dB DOWN)	_____	100 dB - FGHz
TEMPERATURE RATING (DEGREES CENTIGRADE)	_____	-65° c TO + 165° c
DIELECTRIC WITHSTANDING VOLTAGE (MAX. VRMS)	_____	750
INSULATION RESISTANCE (MIN. MEGOHMS)	_____	10,000
CONTACT RESISTANCE		
• CENTER CONTACT (MAX. MILLIOHMS)	_____	6.0
• OUTER CONTACT (MAX. MILLIOHMS)	_____	2.0

TERMINATED IN A 50 OHM LOAD

REV.	DCN NO.	DATE	APP.	DIMENSIONS ARE IN INCHES TOLERANCES			dynawave <small>INCORPORATED</small> HAVERHILL, MA. 01835
AA	04-1709	6/1/04	DC	DECIMALS	FRACTIONAL	ANGULAR	
				.X [±] .030 .XX [±] .010 .XXX [±] .005	± 1/64	X ± 1 Ø X' X' ± 5'	TITLE SMA JACK 4 HOLE FLANGE FIELD REPLACEABLE, SEPERATE FEED THRU AND CONTACT
				DRAWN: DC	DATE: 6/1/04		
				APP.: DC	DATE: 6/1/04		DWG. NO. 9954-0112-6219
				CODE IDENT. 2J899	SHEET 1 OF 2		

SPECIFICATION CONTROL DRAWING

3. MECHANICAL

CAPTIVATION—CENTER CONTACT
MAX.AXIAL FORCE _____ 6.0 LBS.
MAX. RADIAL TORQUE _____ N/A
CENTER CONTACT AXIAL FORCES
● INSERTION (MAX. OUNCES) _____ INTERFACE 48.0, REAR 32.0
● WITHDRAWAL (MIN. OUNCES) _____ INTERFACE 2.0, REAR 1.0
CONNECTOR DURABILITY (MIN. CYCLES) _____ 500

4. ENVIRONMENTAL

TEMPERATURE CYCLING _____ MIL-STD-202, METHOD 102, COND. C (-65 °c TO + 200°)
SHOCK _____ MIL-STD-202, METHOD 213, COND. I (100 G's)
VIBRATION _____ MIL-STD-202, METHOD 204, COND. D (20 G's)
MOISTURE RESISTANCE _____ MIL-STD-202, METHOD 106, LESS STEP 7b
CORROSION _____ MIL-STD-202, METHOD 101, COND. B (48 HOURS)
BAROMETRIC PRESSURE (ALTITUDE) _____ MIL-STD-202, METHOD 105, COND. C (70,000 FT.) (190RMS)
HERMETICITY: _____ BEAD SHALL NOT EXCEED A LEAK RATE OF 10⁻⁸ cc/SEC.
TRACER GAS OF HELIUM AT A PRESSURE DIFFERENTIAL OF 15 P.S.I.

5. MATERIAL

BODY _____ STAINLESS STEEL PER ASTM A 582, TYPE 303, COND. A
CONTACTS _____ BERYLLIUM COPPER PER ASTM B 196, COPPER ALLOY
UNS C 17800, TEMPER TD04
INSULATOR _____ TEFLON PER ASTM D 4894-91
EMI GASKET _____ SILVER PLATED ALUMINUM IN SILICONE RUBBER
GLASS SEAL:
OUTER RING & PIN _____ KOVAR PER MIL-I-23011
GLASS _____ CORNING 7052

6. FINISH

BODY _____ PASSIVATE PER QQ-P-35C, TYPE VI.
CONTACTS _____ GOLD PER ATSM B 488, TYPE I, CODE C, CLASS 2.5
(.000100 Minimum Thickness) OVER NICKEL PER
QQ-N-290 (.000050 Minimum Thickness) OVER
COPPER per MIL-C-14550 (.000010 Minimum Thickness).
INSULATOR AND EMI GASKET _____ N/A
GLASS SEAL (OUTER RING & PIN) _____ GOLD PER ATSM B 488, TYPE I, CODE C, CLASS 1.25
(.000050 Minimum Thickness) OVER NICKEL PER
QQ-N-290, CLASS 1 (.000150 Minimum Thickness)