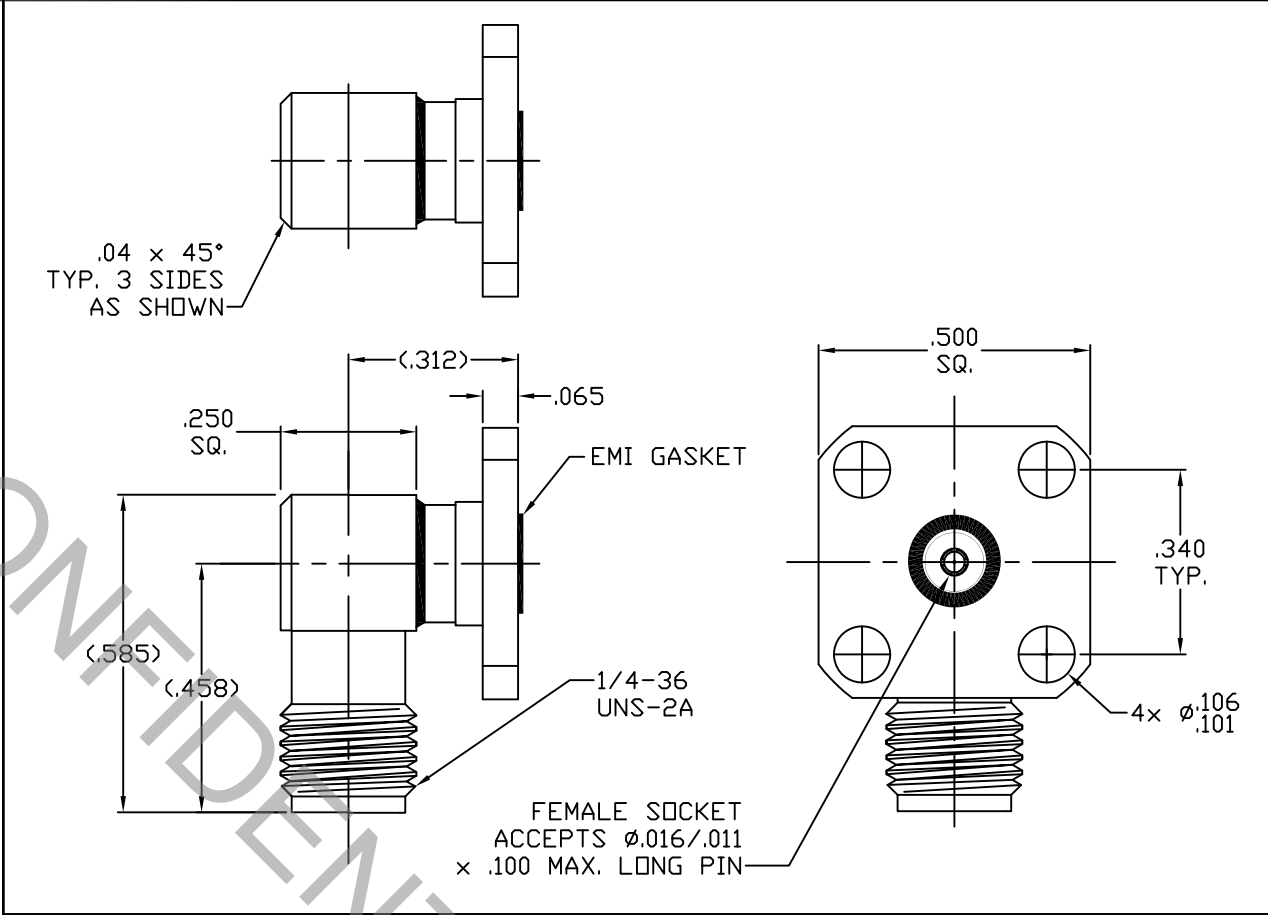


CONNECTOR SERIES: : SMA  
 CENTER CONTACT: : FEMALE SOCKET  
 NOMINAL IMPEDANCE: (OHMS) : 50  
 CABLE ACCOMMODATION: : N/A

CONTACT CAPTIVATION: : 6.0 LBS.  
 CABLE ATTACHMENT: : N/A  
 CONTACT ATTACHMENT: : N/A  
 FREQUENCY RANGE: : DC TO 22.0 GHz.  
 QPL SPECIFICATION: : N/A  
 QPL EQUIVALENT: : N/A

MATING CHARACTERISTICS : MIL-STD-348-310.2  
 MATING TORQUE : 7 TO 10 POUND INCHES  
 MOUNTING TORQUE : N/A  
 TEMPERATURE RANGE : -65 / +165 DEGREES C.

ELECTRICAL:  
 VSWR MAXIMUM : 1.07 + .010 x F (F IN GHz.)  
 INSERTION LOSS MAXIMUM : .040dB x  $\sqrt{F}$ GHz.  
 R.F. LEAKAGE MINIMUM : -100 dB - F (F IN GHz.)  
 INSULATION RESISTANCE : 10,000 MEGOHMS MIN.  
 D.W.V. : 750 VRMS MAX.



ITEM	MATERIALS	FINISHES
BODY	: 303 STAINLESS PER ASTM-A-582	: PASSIVATE PER QQ-P-35
EMI GASKET	: ALUMINUM IMPREGNATED SILICONE	: SILVER PLATED
INSULATOR	: PTFE PER ASTM-D-1710	: N/A
CONTACT	: COPPER, BERYLLIUM PER ASTM-B196	: GOLD PER ASTM-B-488

REV.	DCN NUMBER	DATE	APP.
AA	15-1831	6/2/15	TS
AB	15-1837	6/3/15	TS

**SPECIFICATION CONTROL DRAWING**

TOLERANCES		DEGREES
DECIMALS	FRACTIONAL	
.X ±.030		X°±1'0"
.XX ±.010	± 1/16"	X°X' ±15'
.XXX ±.005		

DRAWN: TS	DATE: 6/2/15	
APPROVED: DC	DATE: 6/2/15	
SCALE	CODE IDENT	SHEET
N/A	2J899	1 of 1

**dynawave**  
 INCORPORATED  
 Haverhill, MA. 01835

TITLE  
**SMA JACK, RIGHT  
 ANGLE, FIELD  
 REPLACEABLE, EMI**

DRAWING  
 NO. **9958-0781-6245**